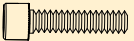
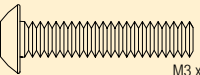


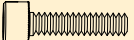
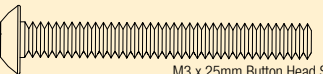
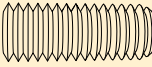






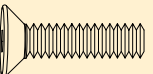

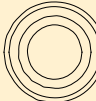
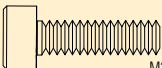
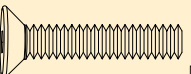


FASTENERS // VERBINDUNGSELEMENTE // ATTACHES // ELEMENTI DI FISSAGGIO //////////////////////////////////////

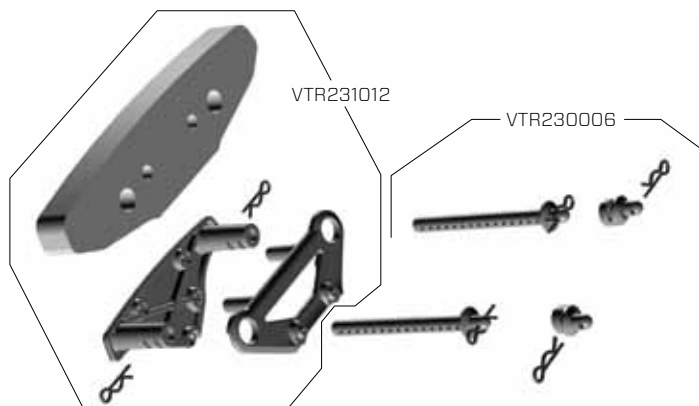
 <p>x 8 M2 x 10mm Cap Head Screw M2 x 10mm Innensechskantschrauben Vis à tête creuse M2 x 10mm Viti a testa bombata M2 x 10mm VTR235005</p>	 <p>x 12 M3 x 14mm Button Head Screw M3 x 14mm Halbrundsrauben Vis à tête bombée M3 x 14mm Viti testa tonda M3 x 14mm VTR235109</p>	 <p>x 2 M3 x 3mm Cup Point Set Screw M3 x 3mm Ringschneide Gewindestift Vis Imbus à bout cuvette M3 x 3mm Tazza punto grani M3 x 3mm VTR235320</p>	 <p>x 2 3.2mm x 7mm x .5mm Washer 3,2mm x 7mm x ,5mm Unterlegscheiben Rondelle 3,2mm x 7mm x ,5mm Rondella 3,2mm x 7mm x ,5mm VTR236076</p>
 <p>x 1 M2.5 x 10mm Cap Head Screw M2.5 x 10mm Innensechskantschrauben Vis à tête creuse M2,5 x 10mm Viti a testa bombata M2,5 x 10mm VTR235014</p>	 <p>x 2 M3 x 25mm Button Head Screw M3 x 25mm Halbrundsrauben Vis à tête bombée M3 x 25mm Viti testa tonda M3 x 25mm VTR235113</p>	 <p>x 4 M4 x 10mm Cup Point Set Screw M4 x 10mm Ringschneide Gewindestift Vis Imbus à bout cuvette M4 x 10mm Tazza punto grani M4 x 10mm VTR235347</p>	 <p>x 10 5mm x 10mm x 4mm Ball Bearing 5mm x 10mm x 4mm Kugellager Roulement 5mm x 10mm x 4mm Cuscinetto a sfere 5mm x 10mm x 4mm VTR237004</p>
 <p>x 10 M2.8 x 10mm Cap Head Screw M2,8 x 10mm Innensechskantschrauben Vis à tête creuse M2,8 x 10mm Viti a testa bombata M2,8 x 10mm VTR235222</p>	 <p>x 10 M2.5 x 4mm Button Head Screw M2,5 x 4mm Halbrundsrauben Vis à tête bombée M2,5 x 4mm Viti testa tonda M2,5 x 4mm VTR235095</p>	 <p>x 4 M3 Nylock Nut M3 Mutter Nylock Écrou Nylock M3 Dado Nylock M3 VTR236014</p>	 <p>x 10 8mm x 12mm x 3.5mm Ball Bearing 8mm x 12mm x 3,5mm Kugellager Roulement 8mm x 12mm x 4mm Cuscinetto a sfere 5mm x 10mm x 4mm VTR237019</p>
 <p>x 2 M3 x 8mm Cap Head Screw M3 x 8mm Innensechskantschrauben Vis à tête creuse M3 x 8mm Viti a testa bombata M3 x 8mm VTR235025</p>	 <p>x 29 M3 x 10mm Flat Head Screw M3 x 10mm Flachkopfschrauben Vis à tête fraisée M3 x 10mm Viti a testa piatta M3 x 10mm VTR235176</p>	 <p>x 4 M4 Nylock Flanged Nut M4 Mutter Nylock angeflanscht Écrou Nylock bride M4 Dado Nylock flangiato M4 VTR236025</p>	 <p>x 4 12mm x 18mm x 4mm Ball Bearing 12mm x 18mm x 4mm Kugellager Roulement 12mm x 18mm x 4mm Cuscinetto a sfere 12mm x 18mm x 4mm VTR237029</p>
 <p>x 4 M3 x 10mm Cap Head Screw M3 x 10mm Innensechskantschrauben Vis à tête creuse M3 x 10mm Viti a testa bombata M3 x 10mm VTR235107</p>	 <p>x 26 M3 x 14mm Flat Head Screw M3 x 14mm Flachkopfschrauben Vis à tête fraisée M3 x 14mm Viti a testa piatta M3 x 14mm VTR235178</p>		

REPLACEMENT PARTS // ERSATZTEILE // PIÈCES DE RECHANGE // PEZZI DI RICAMBIO //

Part # Nummer Numéro Codice	Description	Beschreibung	Description	Descrizione
DYN5204EC	Dynamite Speedpack Silver 2S 7.4V 3000mAh 20C Li-Po Battery	Li-Po Dynamite Speedpack Silver 2S 7.4V 3000mAh 20C	Dynamite Speedpack Silver 2S 7.4V 3000mAh 20C Li-Po Batterie	Batteria Li-Po Dynamite Speedpack Silver 2S 7.4V 3000mAh 20C
DYN4114	10W Li-Po AC Balance Charger	Dynamite 10W Li-Po AC Balance Ladegerät	Chargeur équilibrer Li-Po AC 10W	Caricatore bilanciato Dynamite 10W Li-Po AC
DYN4940	Tazer Waterproof 45A Sensorless Brushless ESC	Dynamite Tazer spritzwassergeschützter 45A Sensorloser Brushless ESC / Regler	Contrôleur Brushless Dynamite Tazer sensorless étanche 45A	ESC brushless Dynamite Tazer Waterproof 45A senza sensori
DYN4942	Tazer 3300Kv 4-Pole Brushless Motor	Dynamite Tazer 3300Kv 4-Pol Brushless Motor	Moteur brushless Dynamite Tazer 3300Kv 4 pôles	Motore brushless Dynamite Tazer 3300Kv 4-Poli
SPM2310	DX2E 2-Channel DSM Surface Radio	Spektrum DX2E Set Sender mit Empfänger	Radio 2 voies DX2E DSM	Radio per auto DX2E 2-canali DSM
SPMSR200WP	SR200WP 2 Channel Waterproof Receiver	Spektrum SR200WP 2K DSM Sport Empfänger Wassergeschützt	Récepteur 2 voies étanche SR200WP DSM	Ricevitore impermeabile SR200WP 2 canali
VTR13001	113WP Waterproof Standard Servo	113WP Standard Servo Spritzwassergeschützt	Servo 113WP format standard étanche	Servo standard impermeabile 113WP
VTR230015	1969 Chevrolet Camaro SS Body Set, Black: V100	1969 Chevrolet Camaro SS Karosserie Set, Schwarz: V100	Carrosserie Chevrolet Camaro SS 69', noire	1969 Chevrolet Camaro SS set carrozzeria, nera: V100
VTR230016	1969 Chevrolet Camaro SS Sticker Sheet	1969 Chevrolet Camaro SS Aufkleberbogen	Planche de décoration pour carrosserie de Chevrolet Camaro SS 69'	1969 Chevrolet Camaro SS foglio adesivi

FRONT BUMPER // FRONTSTOSSSTANGE // PARE CHOC AVANT // GL PARAURTI ANTERIORE //////////////////////////////////////

Part # Nummer Numéro Codice	Description	Beschreibung	Description	Descrizione
VTR230006	Body Post Set	Karosseriehalter Set	Set de supports de carrosserie	Set supporti carrozzeria
VTR231012	Bumper Set Front	Stoßfängerset Vorne	Pare choc avant	Set paraurti anteriore



FRONT SUSPENSION // FRONT AUFHÄNGUNG // SUSPENSION AVANT // SOSPENSIONE ANTERIORE //////////////////////////////////////

Part # Nummer Numéro Codice	Description	Beschreibung	Description	Descrizione
VTR43007	Wheel FR Deep Mesh 54x26mm Black Chrome (2)	Felge Vorne Deep Mesh 54x26mm Schwarz/Chrom 2st.	Jante nid d'abeille à déport AV 54x26mm, chrome foncé (2)	Cerchio ruota FR 54x26mm Nero cromato (2)
VTR43011	Tire 67x26mm V1 Performance S Compound (2)	Reifen 67x26mm V1 Performance Weich (2)	Pneu V1 performance S Compound 67x26mm (2)	Gomma 67x26mm V1 Performance S Compound (2)
VTR232042	Axle Shaft Set FR/RR (2)	Radachsen Set Vorne/Hinten	Jeu d'axes de roues AV/ARR (2)	Set alberino asse FR/RR (2)
VTR232051	Wheel Hex Brake Rotor & Caliper FR/RR Set	Scheibenbremse mit Bremsattel Vorne/Hinten	Jeu d'hexagones de roues avec disque et étrier de frein AV/ARR	Set pinza e disco freno FR/RR
VTR234014	Suspension Arm Set FR/RR Upper & Lower	Querlenker set Vorne/Hinten	Jeu de bras de suspension inférieur et supérieur AV/ARR	Set bracci sospensioni FR/RR super. infer.
VTR234015	Front Upright Set LH/RH	Achsschenkel set Vorne L/R	Jeu de fusées avant	Set anteriore superiore LH/RH
VTR235005	M2 x 10mm Cap Head Screw	M2 x 10mm Innensechskantschrauben	Vis à tête creuse M2 x 10mm	Viti a testa bombata M2 x 10mm
VTR236025	M4 Nylock Flanged Nut	M4 Muttern Nylock angeflanscht	Écrou Nylock bride M4	Dado Nylock flangiato M4



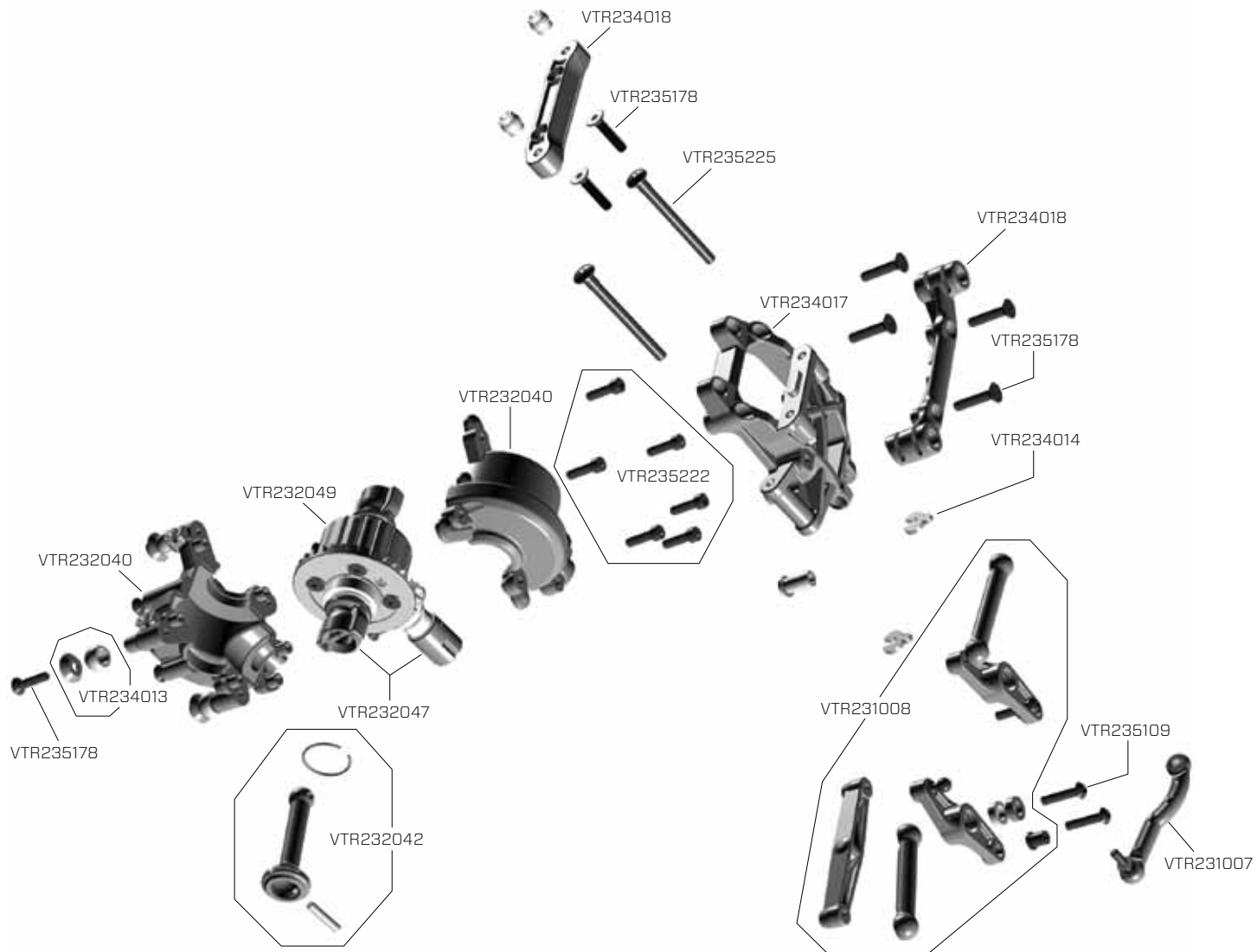
REAR SUSPENSION // HECK AUFHÄNGUNG // SUSPENSION ARRIÈRE // SOSPENSIONE POSTERIORE //////////////////////////////////////

Part # Nummer Numéro Codice	Description	Beschreibung	Description	Descrizione
VTR43008	Wheel RR Deep Mesh 54x30mm Black Chrome (2)	Felge Hinten Deep Mesh 54x30mm Schwarz/Chrom 2st.	Jante nid d'abeille à déport ARR 54x30mm, chrome foncé (2)	Cerchio ruota RR 54x30mm Nero cromato (2)
VTR43012	Tire 67x30mm V1 Performance S Compound (2)	Reifen 67x30mm V1 Performance Weich (2)	Pneu V1 performance S Compound 67x30mm (2)	Gomme 67x30mm V1 Performance S Compound (2)
VTR232042	Axle Shaft Set FR/RR (2)	Radachsen Set Vorne/Hinten	Jeu d'axes de roues AV/ARR (2)	Set alberino asse FR/RR (2)
VTR232051	Wheel Hex Brake Rotor & Caliper FR/RR Set	Scheibenbremse mit Bremsattel Vorne/Hinten	Jeu d'hexagones de roues avec disque et étrier de frein AV/ARR	Set pinza e disco freno FR/RR
VTR234014	Suspension Arm Set FR/RR Upper & Lower	Querlenker set Vorne/Hinten	Jeu de bras de suspension inférieur et supérieur AV/ARR	Set bracci sospensioni FR/RR super. infer.
VTR234015	Front Upright Set LH/RH	Achsschenkel set Vorne L/R	Jeu de fusées arrières	Set anteriore superiore LH/RH
VTR235005	M2 x 10mm Cap Head Screw	M2 x 10mm Innensechskantschrauben	Vis à tête creuse M2 x 10mm	Viti a testa bombata M2 x 10mm
VTR235226	M3 x 28mm Button Head Outer Hinge Pin Screw	Rundkopfstiftschraube Hinge Pin Außen M3x28mm	Vis/axe de suspension extérieur M3x28mm	M3 x 28mm Vite a testa bombata
VTR236025	M4 Nylock Flanged Nut	M4 Muttern Nylock angeflanscht	Écrou Nylock bride M4	Dado Nylock flangiato M4



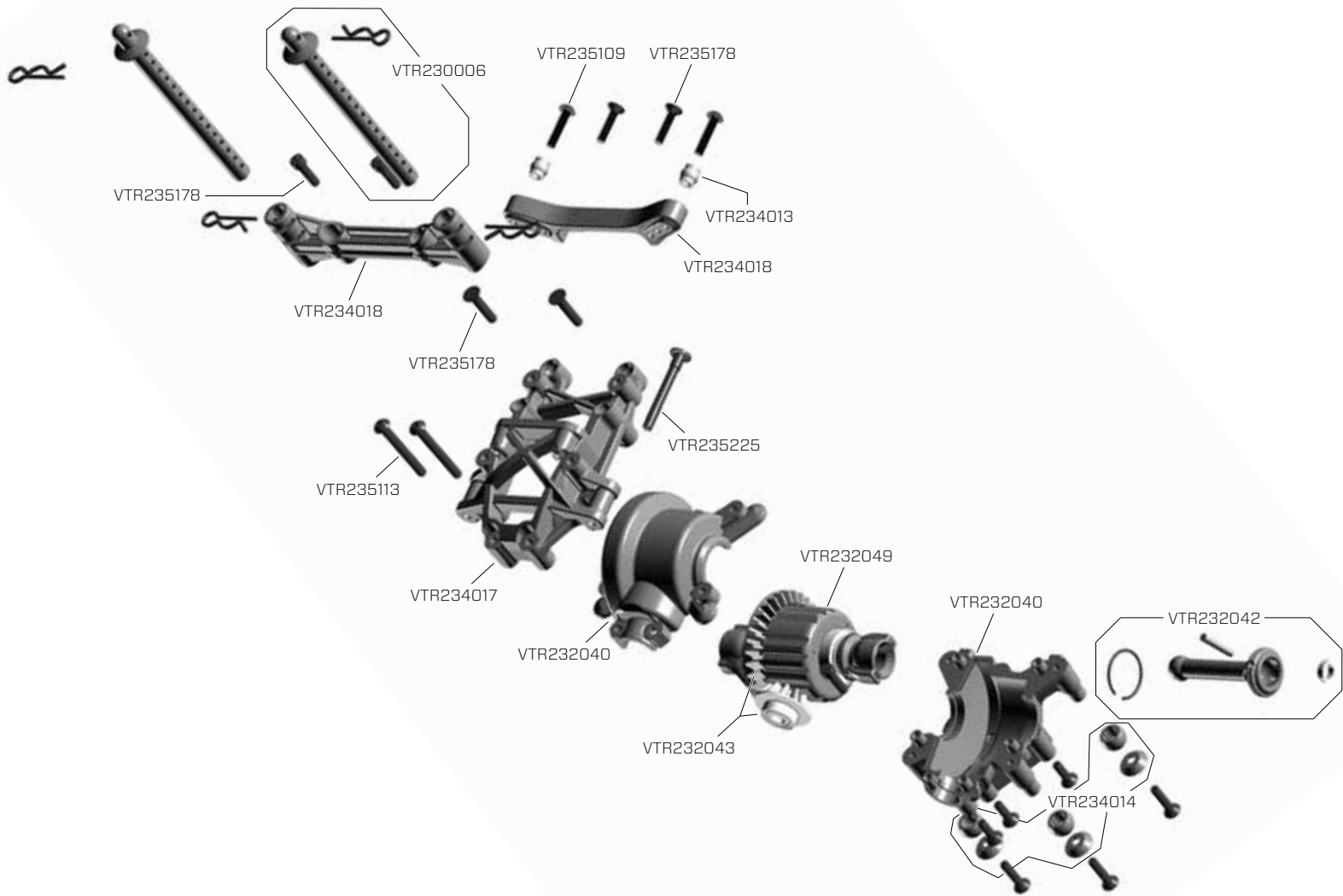
FRONT CLIP // FRONTCLIP // CELLULE AVANT // CLIP ANTERIORE //////////////////////////////////////

Part # Nummer Numéro Codice	Description	Beschreibung	Description	Descrizione
VTR231007	Steering Servo Saver Set & Servo Mounts	Servosaver und Servobefestigung	Sauve servo et supports de servo	Set salva servo sterzo & supporti servo
VTR231008	Steering Bell Crank Set	Umlenkset für Lenkung	Jeu de renvois de direction	Set squadrette sterzo
VTR232040	Gear Box Upper Lower Set	Getriebekasten Set	Carter de transmission supérieur et inférieur	Set scatola riduttore sup. infer.
VTR232042	Axle Shaft Set FR/RR (2)	Radachsen Set Vorne/Hinten	Jeu d'axes de roues AV/ARR (2)	Set alberino asse FR/RR (2)
VTR232047	Diff Outdrive Cup Set FR/RR	Antriebsklauenset Vorne/Hinten	Jeu de noix de sortie de différentiel AV/ARR	Set trascinatori diff. FR/RR
VTR232049	Complete Differential Set FR/RR	Diff Komplettset Vorne/Hinten	Différentiel complet AV/ARR	Set differenziale completo FR/RR
VTR234013	Suspension Pivot Balls & Washer Set	Pivotkugel und Scheibenset	Jeu de rondelles et de rotules de suspension	Set rondelle a attacchi a sfera sospensioni
VTR234014	Suspension Arm Set FR/RR Upper & Lower	Querlenkerset Vorne/Hinten	Jeu de bras de suspension inférieur et supérieur AV/ARR	Set bracci sospensioni FR/RR super. infer.
VTR234017	Upper Suspension Arm Mount FR/RR	Querlenkerhalter Vorne/Hinten	Support de bras de suspension supérieurs AV/ARR	Supporto braccio super. sospensioni FR/RR
VTR234018	Shock Tower Set FR/RR	Dämpferbrücke	Jeu de supports d'amortisseurs AV/ARR	Set torre ammortizzatori FR/RR
VTR235109	M3 x 14mm Button Head Screw	M3 x 14mm Halbrundsrauben	Vis à tête bombée M3 x 14mm	Viti testa tonda M3 x 14mm
VTR235178	M3 x 14mm Flat Head Screw	M3 x 14mm Flachkopfschrauben	Vis à tête fraisée M3 x 14mm	Viti a testa piatta M3 x 14mm
VTR235222	M2.8 x 10mm Cap Head Screw	M2,8 x 10mm Innensechskantschrauben	Vis à tête creuse M2,8 x 10mm	Viti a testa bombata M2,8 x 10mm
VTR235225	M3 x38mm Button Head Inner Hinge Pin Screw	Rundkopfstiftschraube Hinge Pin Innen M3x38mm	Vis/axe de suspension intérieur M3x38mm	M3 x38mm Vite a testa bombata



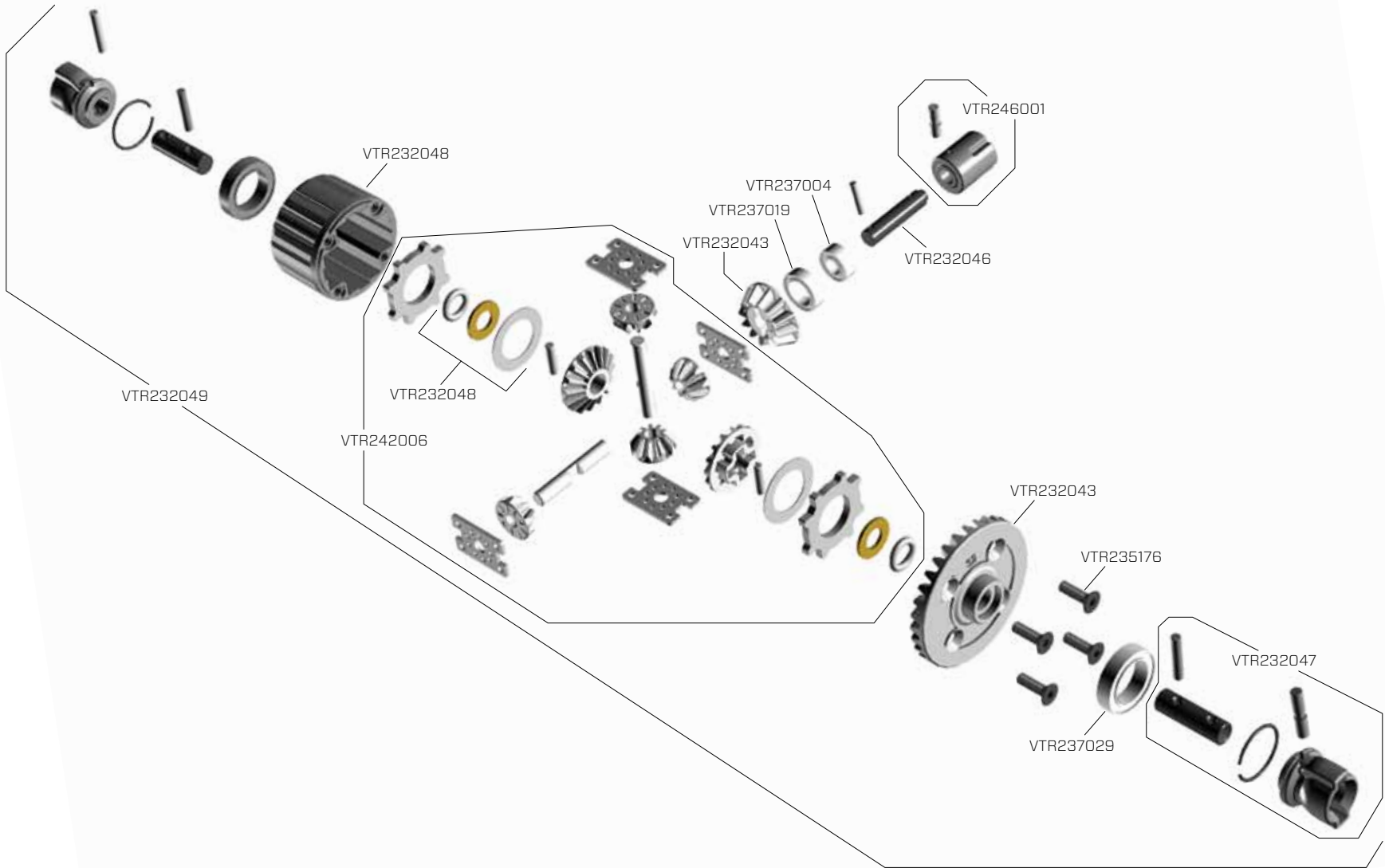
REAR CLIP // HECKCLIP // CELLULE ARRIERE // CLIP POSTERIORE //////////////////////////////////////

Part # Nummer Numéro Codice	Description	Beschreibung	Description	Descrizione
VTR230006	Body Post Set	Karosseriehalter	Set de supports de carrosserie	Set supporti carrozzeria
VTR232040	Gear Box Upper Lower Set	Getriebekasten Set	Carter de transmission supérieur et inférieur	Set scatola riduttore sup. infer.
VTR232042	Axle Shaft Set FR/RR (2)	Radachsen Set Vorne/Hinten	Jeu d'axes de roues AV/ARR (2)	Set alberino asse FR/RR (2)
VTR232043	Diff Ring/Pinion 32T/12T FR/RR	Kegelrad und Triebbling 32Z/12Z Vorne/Hinten	Pignon 12T et couronne 32T de différentiel AV/ARR	Anello differenziale/Pignone 32T/12T FR/RR
VTR232049	Complete Differential Set FR/RR	Diff Komplettsset Vorne/Hinten	Différentiel complet AV/ARR	Set differenziale completo FR/RR
VTR234013	Suspension Pivot Balls & Washer Set	Pivotkugel und Scheibenset	Jeu de rondelles et de rotules de suspension	Set rondelle e attacchi a sfera sospensioni
VTR234014	Suspension Arm Set FR/RR Upper & Lower	Querlenkerset Vorne/Hinten	Jeu de bras de suspension inférieur et supérieur AV/ARR	Set bracci sospensioni FR/RR super. infer.
VTR234017	Upper Suspension Arm Mount FR/RR	Querlenkerhalter Vorne/Hinten	Support de bras de suspension supérieurs AV/ARR	Supporto braccio super. sospensioni FR/RR
VTR234018	Shock Tower Set FR/RR	Dämpferbrücke	Jeu de supports d'amortisseurs AV/ARR	Set torre ammortizzatori FR/RR
VTR235109	M3 x 14mm Button Head Screw	M3 x 14mm Halbrundschrauben	Vis à tête bombée M3 x 14mm	Viti testa tonda M3 x 14mm
VTR235113	M3 x 25mm Button Head Screw	M3 x 25mm Halbrundschrauben	Vis à tête bombée M3 x 25mm	Viti testa tonda M3 x 25mm
VTR235178	M3 x 14mm Flat Head Screw	M3 x 14mm Flachkopfschrauben	Vis à tête fraisée M3 x 14mm	Viti a testa piatta M3 x 14mm
VTR235225	M3 x38mm Button Head Inner Hinge Pin Screw	Rundkopfstiftschraube Hinge Pin Innen M3x38mm	Vis/axe de suspension intérieur M3x38mm	M3 x38mm Vite a testa bombata



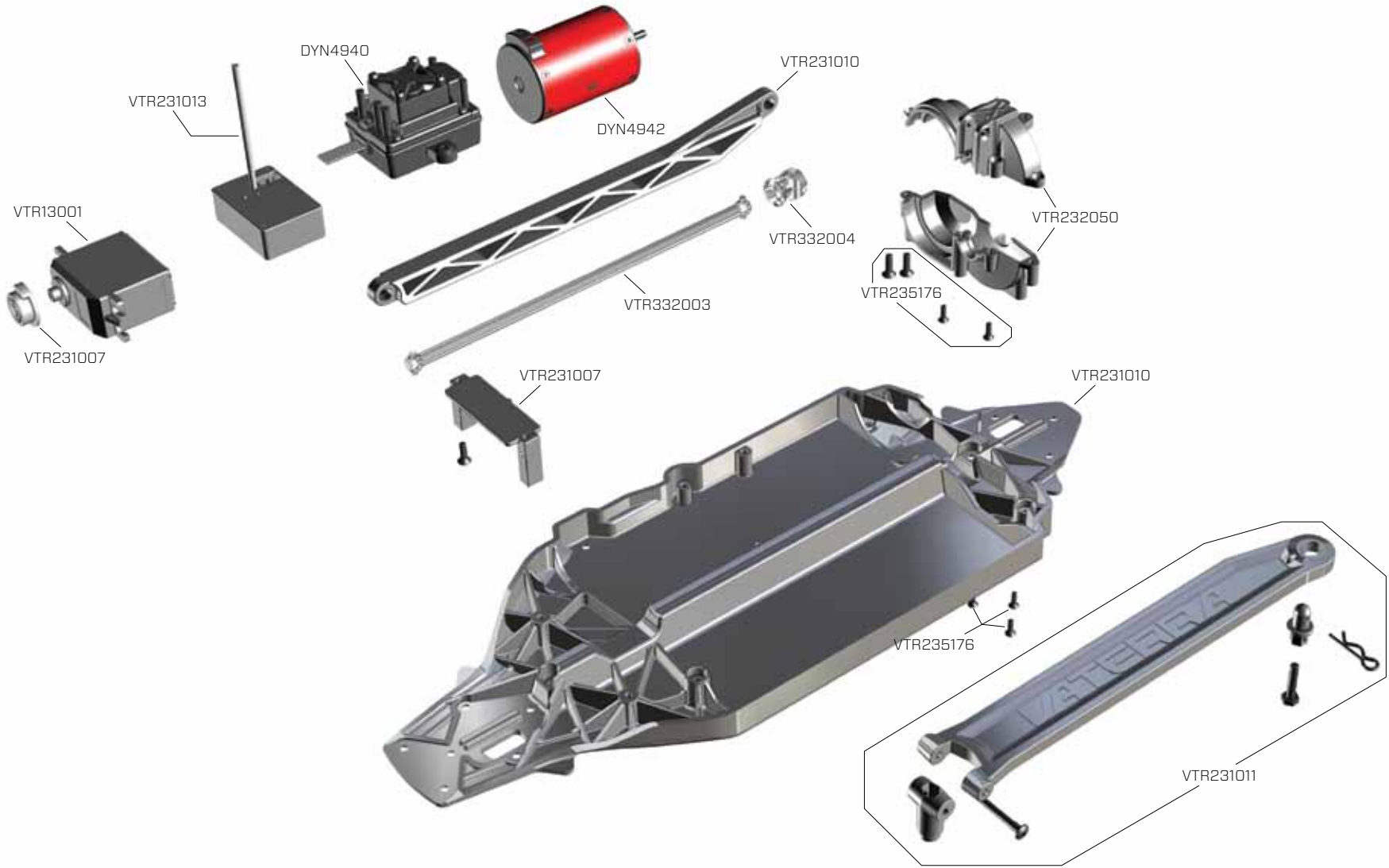
DIFFERENTIAL // DIFFERENTIAL // DIFFÉRENTIEL // DIFFERENZIALE //////////////////////////////////////

Part # Nummer Numéro Codice	Description	Beschreibung	Description	Descrizione
VTR232043	Diff Ring/Pinion 32T/12T FR/RR	Kegelrad und Triebbling 32Z/12Z Vorne/Hinten	Pignon 12T et couronne 32T de différentiel AV/ARR	Anello diff./pignone 32T/12T FR/RR
VTR232046	Bevel Gear Shaft FR/RR & Pins	Kegelradsatz mit Wellen	Axe de pignon d'attaque AV/ARR avec goupilles	Albero coppia conica FR/RR & perni
VTR232047	Diff Outdrive Cup Set FR/RR	Antriebsklauenset Vorne/Hinten	Jeu de noix de sortie de différentiel AV/ARR	Set trascinatori diff. FR/RR
VTR232048	Diff Housing and Spacers	Diffgehäuse inkl. Shimscheiben	Corps de différentiel avec cales	Scatola diff. e distanziali
VTR232049	Complete Differential Set FR/RR	Diff Komplettset Vorne/Hinten	Différentiel complet AV/ARR	Set completo differenziale FR/RR
VTR235176	M3 x 10mm Flat Head Screw	M3 x 10mm Flachkopfschrauben	Vis à tête fraisée M3 x 10mm	Viti a testa piatta M3 x 10mm
VTR237004	5 x 10 x 4mm Ball Bearing	5 x 10 x 4mm Kugellager	Roulement 5 x 10 x 4mm	Cuscinetto a sfere 5 x 10 x 4mm
VTR237019	8 x 12 x 3.5mm Ball Bearing	8 x 12 x 3.5mm Kugellager	Roulement 8 x 12 x 3.5mm	Cuscinetto a sfere 8 x 12 x 3.5mm
VTR237029	12 x 18 x 4mm Ball Bearing	12 x 18 x 4mm Kugellager	Roulement 12 x 18 x 4mm	Cuscinetto a sfere 12 x 18 x 4mm
VTR237019	8 x 12 x 3.5mm Ball Bearing	8 x 12 x 3.5mm Kugellager	Roulement 8 x 12 x 3.5mm	Cuscinetto a sfere 8 x 12 x 3.5mm
VTR246001	Screw Pin, Clip Post	Stiftschraube (10)	Noix de sortie avec goupille	Perno vite, clip post



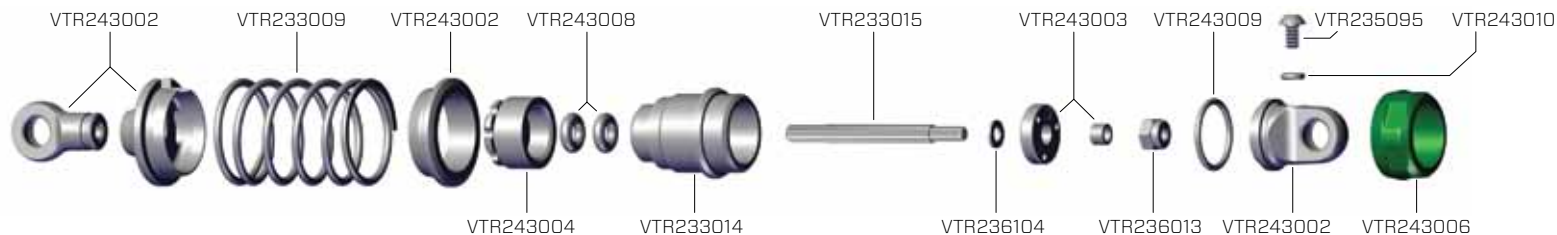
CHASSIS // CHASSIS // CHÂSSIS // TELAIO //////////////////////////////////////

Part # Nummer Numéro Codice	Description	Beschreibung	Description	Descrizione
DYN4940	Tazer Waterproof 45A Sensorless Brushless ESC	Dynamite Tazer spritzwassergeschützter 45A Sensorloser Brushless ESC / Regler	Contrôleur Brushless Dynamite Tazer sensorless étanche 45A	ESC brushless Dynamite Tazer Waterproof 45A senza sensori
DYN4942	Tazer 3300Kv 4-Pole Brushless Motor	Dynamite Tazer 3300Kv 4-Pol Brushless Motor	Moteur brushless Dynamite Tazer 3300Kv 4 pôles	Motore brushless Dynamite Tazer3300Kv 4-Poli
VTR13001	113WP Waterproof Standard Servo	113WP Spritzwassergeschütztes Standard Servo	Servo 113WP format standard étanche	113WP Servo standard impermeabile
VTR231007	Steering Servo Saver Set & Servo Mounts	Servosaver und Servobefestigung	Sauve servo et supports de servo	Set salva servo sterzo & supporti servo
VTR231010	Chassis Set	Chassis Set	Châssis avec renfort	Set telaio
VTR231011	Battery Strap & Mounts	Akku Montageset	Support de batterie	Fascetta batteria e supporti
VTR231013	Antenna Mount Set	Montageset Antenne	Support d'antenne	Set supporto antenna
VTR232050	Gear Cover Motor Plate Heat Shield Set	Getriebeschutzkappe und Motormontageplatte	Set de protection de transmission et de refroidisseur moteur	Piastra motore copertura ingranaggi e protezione calore
VTR332003	Center Driveshaft Aluminum: V100	Antriebswelle Mitte Aluminium: V100	Cardan central en aluminium	Albero trasmissione centrale, alluminio: V100
VTR332004	Center Diff Joint Set Aluminum (2): V100	Antriebsklauenset Aluminium (2) V100	Noix de cardan central en aluminium (2)	Set giunto diff. centrale, allum. (2): V100
VTR235176	M3 x 10mm Flat Head Screw	M3 x 10mm Flachkopfschrauben	Vis à tête fraisée M3 x 10mm	Viti a testa piatta M3 x 10mm



SHOCK ASSEMBLY // STOSSDÄMPFER // ASSEMBLAGE DES AMORTISSEURS // GRUPPO AMMORTIZZATORI //

Part # Nummer Numéro Codice	Description	Beschreibung	Description	Descrizione
VTR233009	Shock Spring Med Silver (2): V100	Vaterra Feder Silber/Mittel: V100	Ressort moyen argent (2)	Molla ammortizz. media, argento (2): V100
VTR233014	Injection Molded Shock Body (Oil-Filled) V100	Öldruckstoßdämpfergehäuse V100	Corps d'amortisseur en plastique injecté	Corpo ammort. stampato iniezione (con olio) V100
VTR233015	Shock Shaft V100	Stoßdämpferkolben V100	Tige d'amortisseur	Albero ammort. V100
VTR235095	M2.5 x 4mm Button Head Screw	M2,5 x 4mm Halbrundsrauben	Vis à tête bombée M2,5 x 4mm	Viti testa tonda M2,5 x 4mm
VTR236013	M2.5 Nylock Nut (10)	M2.5 Stopmutter	Ecrou frein M2.5mm (10)	Dado autobl. M2,5 (10)
VTR236104	2.5mm x 4.6mm x .5mm Washer (10)	Unterlegscheibe 2.5 x 4.6 x .5mm (10)	Rondelle 2.5x4.6x0.5mm (10)	Rondella 2.5 x 4.6 x .5mm (10)
VTR243002	Shock Plastics: Glamis Uno	Dämpfer Kunststoff: Glamis Uno	Pièces plastiques d'amortisseur	Parti in plastica ammort.: Glamis Uno
VTR243003	Shock Pistons: Glamis Uno	Kolbenplatten: Glamis Uno	Piston d'amortisseur	Pistone ammort.: Glamis Uno
VTR243004	Shock Bottom Cap, Plastic: Glamis Uno	Dämpferkappen oben / Kunststoff Glamis Uno	Bouchon inférieur en plastique	Tappo infer. ammort. in plastica: Glamis Uno
VTR243005	Shock, Rod End Tool: Glamis Uno	Montagewerkzeug Dämpfer: Glamis Uno	Outil pour chape d'amortisseur	Attrezzo terminale asta ammort.: Glamis Uno
VTR243006	Shock Cap (2): Glamis Uno	Dämpferkappen (2) Glamis Uno	Bouchon supérieur (2)	Tappo ammort. (2): Glamis Uno
VTR243008	O-Ring, Shocks (8): Glamis Uno	O-Ring / Dämpfer (8) Glamis Uno	Joint torique de tige d'amortisseur (8)	O-Ring, ammort. (8): Glamis Uno
VTR243009	O-Ring, Top Cap (4): Glamis Uno	O-Ring / Dämpferkappe (4) Glamis Uno	Joint torique de bouchon supérieur (4)	O-Ring, tappo super. (4): Glamis Uno
VTR243010	O-Ring, Bleeder Screw (4): Glamis Uno	O-Ring / Entlüftungsschraube (4): Glamis Uno	Joint torique de vis de purge (4)	O-Ring, vite di spurgo (4): Glamis Uno



OPTIONAL PARTS // DIVERSE TEILE // PIÈCES OPTIONNELLES // COMPONENTI OPZIONALI //

Part # Nummer Numéro Codice	Description	Beschreibung	Description	Descrizione
VTR43002	Wheel FR/RR 54x26mm Mesh TC Black (2)	Felge Vorne/Hinten 54x26mm Mesh TC Schwarz 2St.	Jante nid d'abeille AV/ARR 54x26mm, noire (2)	Ruote FF/RR 54x26mm Mesh TC nere (2)
VTR43003	Wheel FR Deep Mesh 54x26mm Chrome & Black (2)	Felge Vorne Deep Mesh 54x26mm Schwarz/Chrom 2St.	Jante nid d'abeille à déport AV 54x26mm, noire/chrome (2)	Cerchio ruota FR 54x26mm nero cromato (2)
VTR43004	Wheel RR Deep Mesh 54x30mm Chrome & Black (2)	Felge Hinten Deep Mesh 54x30mm Schwarz/Chrom 2St.	Jante nid d'abeille à déport ARR 54x30mm, noire/chrome (2)	Cerchio ruota RR 54x30mm nero cromo (2)
VTR43005	Wheel FR Deep Mesh 54x26mm Matte Gun Metal (2)	Felge Vorne Deep Mesh 54x26mm Gun Metal 2St.	Jante nid d'abeille à déport AV 54x26mm, grise acier matte (2)	Cerchio ruota FR 54x26mm canna di fucile (2)
VTR43006	Wheel Rr Deep Mesh 54X30mm Matte Gun Metal (2)	Felge Hinten Deep Mesh 54x30mm Gun Metal 2St.	Jante Nid D'abeille À Déport Arr 54X30mm, Grise Acier Matte (2)	Cerchio ruota RR 54x30mm canna di fucile (2)
VTR43007	Wheel FR Deep Mesh 54x26mm Black Chrome (2)	Felge Vorne Deep Mesh 54x26mm Schwarz Chrom (2)	Jante AV Nid d'abeille 54x26mm Chrome noir (2)	Ruote FR 54x26mm Deep Mesh Nero/cromo (2)
VTR43008	Wheel RR Deep Mesh 54x30mm Black Chrome (2)	Felge Hinten Deep Mesh 54x30mm Schwarz Chrom (2)	Jante AR Nid d'abeille 54x30mm Chrome noir (2)	Ruote RR 54x30mm Deep Mesh Nero/cromo (2)
VTR43009	Wheel FR Nissan GTR 54x26mm Gun Metal (2)	Felge Vorne Nissan GTR 54x26mm Gun Metal 2st.	Jante AV Nissan GTR 54X26mm, grise acier (2)	Ruota Nissan FR GTR 54x26mm canna di fucile (2)
VTR43010	Wheel RR Nissan GTR 54x30mm Gun Metal (2)	Felge Hinten Nissan GTR 54x30mm Gun Metal 2st.	Jante ARR Nissan GTR 54X30mm, grise acier (2)	Ruota Nissan RR GTR 54x30mm canna di fucile (2)
VTR43011	Tire 67x26mm V1 Performance S Compound (2)	Reifen 67x26mm V1 Performance Weich(2)	Pneu V1 performance S Compound 67x26mm (2)	Gomme 67x26mm V1 Performance S Compound (2)
VTR43012	Tire 67x30mm V1 Performance S Compound (2)	Reifen 67x30mm V1 Performance Weich(2)	Pneu V1 performance S Compound 67x30mm (2)	Gomme 67x30mm V1 Performance S Compound (2)
VTR43013	Tire 67x26mm V1 Slick S compound (2)	Reifen 67x26mm V1 Slick Weich (2)	Pneu V1 Slick S Compound 67x26mm (2)	Gomme 67x26mm V1 Slick S compound (2)
VTR230002	2012 Chevrolet Camaro ZL-1 Body Set Unpainted	Chevrolet Camaro ZL-1 2012 Body Set unlackiert	Carrosserie à peindre Chevrolet Camaro ZL-1 2012	2012 Chevrolet Camaro ZL-1 Set carrozzeria non verniciata
VTR230003	2012 Nissan GTR Body Set Unpainted	Nissan GTR 2012 Body Set unlackiert	Carrosserie à peindre Nissan GTR 2012	Set carrozzeria 2012 Nissan GTR non verniciata
VTR230005	1969 Chevrolet Camaro RS Body Set Unpainted	Chevrolet Camaro RS 1969 Body Set unlackiert	Carrosserie à peindre Chevrolet Camaro RS 1969	Set carrozzeria 1969 Chevrolet Camaro RS non verniciata
VTR230006	Body Post Set	Karosseriehalter Set	Set de supports de carrosserie	Set supporti carrozzeria

Part # Nummer Numéro Codice	Description	Beschreibung	Description	Descrizione
VTR230007	2012 Chevrolet Camaro ZL-1 Body Set Red	Chevrolet Camaro ZL-1 2012 Karosserie Rot	Carrosserie rouge Chevrolet Camaro ZL1 2012	2012 Chevrolet Camaro ZL-1 Set carrozzeria rossa
VTR230008	2012 Nissan GTR Body Set Black	Nissan GTR 2012 Karosserie Schwarz	Carrosserie noire Nissan GTR 2012	Set carrozzeria 2012 Nissan GTR nera
VTR230010	1969 Chevrolet Camaro RS Body Set Gun Metal	Chevrolet Camaro RS 1969 Karosserie Gun Metal	Carrosserie grise foncée Chevrolet Camaro RS 1969	Set carrozzeria 1969 Chevrolet Camaro RS grigio metallizzato
VTR231009	Bumper Rear	Vaterra Stoßfängerset Hinten	Pare choc arrière	Paraurti posteriore
VTR233008	Shock Spring Soft Yellow (2)	Feder Gelb/Weich	Ressort d'amortisseur souple, jaune (2)	Molla ammortizz. morbida gialla (2)
VTR233009	Shock Spring Medium Silver (2)	Feder Silber/Mittel	Ressort d'amortisseur moyen, argent (2)	Molla ammortizz. media argento (2)
VTR233010	Shock Spring Firm Green (2)	Feder Hart/Grün	Ressort d'amortisseur dur, vert (2)	Molla ammortizz. dura verde (2)
VTR234016	Rear Upright Set LH/RH	Radträgerset Hinten L/R	Jeu de fusées arrière	Set superiore poster. LH/RH
VTR331001	Servo Mount Set Aluminum: V100	Servobefestigung Aluminium: V100	Support de servo en aluminium	Set montaggio servo, alluminio: V100
VTR331002	Steering Bellcrank Set Aluminum: V100	Lenkgestänge Aluminium: V100	Renvois de direction en aluminium	Set squadrette sterzo, alluminio: V100
VTR332002	12mm Hex/Brake Rotor Aluminum: V100	V100 Rad- u. Bremsscheibenmitnehmer 12mm Aluminium	Hex 12mm/disque de frein en aluminium	12mm Hex/Rotore freno, alluminio: V100
VTR332005	CV Driveshaft Aluminum (2): V100	CVD Antriebswellen Aluminium (2): V100	Cardan CVD en aluminium (2)	CV Albero trasmissione, allum. (2): V100
VTR332006	Brake Caliper Aluminum (Gold) (4): V100	V100 Bremssattel Aluminium Gold (4): V100	Etrier de frein en aluminium, doré (4)	Pinza freno, alluminio (oro) (4): V100
VTR332007	Brake Caliper Aluminum (Aqua) (4): V100	Bremssattel Aluminium Aqua (4): V100	Etrier de frein en aluminium, bleu (4)	Pinza freno, alluminio (aqua) (4): V100
VTR332008	Motor Plate Aluminum: V100	Motorträger Aluminium: V100	Support moteur en aluminium	Piastra motore, alluminio: V100
VTR333001	Adjustable Coil-Over Shock Set (4) Aluminum: V100	Öldruckstoßdämpfer einstellbar (4) Aluminium: V100	Set de 4 amortisseurs réglables en aluminium	Set regolazione molla ammort. (4) alluminio: V100
VTR334005	Front Upright Set LH/RH Aluminum: V100	Lenkhebelset Vorne L-R Aluminium: V100	Paire de fusées avant en aluminium	Set montante anteriore LH/RH alluminio: V100

Part # Nummer Numéro Codice	Description	Beschreibung	Description	Descrizione
VTR334006	Rear Upright Set LH/RH Aluminum: V100	Radträgerset Hinten L-R Aluminium: V100	Paire de fusées arrière en aluminium	Set montante posteriore LH/RH alluminio: V100
VTR334007	Front Shock Tower Aluminum: V100	Dämpferbrücke vorne Aluminium: V100	Support d'amortisseurs avant en aluminium	Torre alluminio ammort. anteriore: V100
VTR334008	Rear Shock Tower Aluminum: V100	Dämpferbrücke hinten Aluminium V100	Support d'amortisseurs arrière en aluminium	Torre alluminio ammort. posteriore: V100



VATERRA™

It is a shared passion for motorsports and radio control. Extreme performance and extreme places. Cars and trucks that look and drive just like the real thing. Most of all, it is about gathering friends, grabbing a vehicle and having the time of your life.

Adventure Driven.™

©2013 Horizon Hobby, Inc.

Vaterra, the Vaterra logo, Adventure Driven., Dynamite, Tazer, DSM, EC3 and Speedpack are trademarks or registered trademarks of Horizon Hobby, Inc.

The Spektrum trademarks is used with permission of Bachmann Industries, Inc.

Chevrolet, the Chevrolet Bowtie Emblem, Camaro, SS and the related vehicle body designs are General Motors trademarks used under license to Horizon Hobby, Inc.

Nissan Motor Co., Ltd. trademarks, designs, copyrights and/or other intellectual property rights are used under license.

Created 6/13 40703