

PRB07000

# Ragazza<sup>TM</sup>

1-METER READY-TO-RUN SAILBOAT

**Owners Manual**  
**Bedienungsanleitung**  
**Manuel de l'utilisateur**  
**Manuale dell'utente**



**PROBOAT<sup>TM</sup>**  
ProBoatModels.com



**NOTICE**

All instructions, warranties and other collateral documents are subject to change at the sole discretion of Horizon Hobby, Inc. For up-to-date product literature, visit [www.horizonhobby.com](http://www.horizonhobby.com) and click on the support tab for this product.

**MEANING OF SPECIAL LANGUAGE**

The following terms are used throughout the product literature to indicate various levels of potential harm when operating this product:

**NOTICE:** Procedures, which if not properly followed, create a possibility of physical property damage AND little or no possibility of injury.

**CAUTION:** Procedures, which if not properly followed, create the probability of physical property damage AND a possibility of serious injury.

**WARNING:** Procedures, which if not properly followed, create the probability of property damage, collateral damage, and serious injury OR create a high probability of superficial injury.



**WARNING:** Read the ENTIRE instruction manual to become familiar with the features of the product before operating. Failure to operate the product correctly can result in damage to the product, personal property and cause serious injury.

This is a sophisticated hobby product and NOT a toy. It must be operated with caution and common sense and requires some basic mechanical ability. Failure to operate this Product in a safe and responsible manner could result in injury or damage to the product or other property. This product is not intended for use by children without direct adult supervision. Do not use with incompatible components or alter this product in any way outside of the instructions provided by Horizon Hobby, Inc. This manual contains instructions for safety, operation and maintenance. It is essential to read and follow all the instructions and warnings in the manual, prior to assembly, setup or use, in order to operate correctly and avoid damage or serious injury.

## Safety Precautions and Warnings

As the user of this product, you are solely responsible for operating in a manner that does not endanger yourself and others or result in damage to the product or the property of others.

- When handling and/or transporting your boat, always pick up the boat from the front, keeping all moving parts pointed away from you.
- Always keep a safe distance in all directions around your model to avoid collisions or injury. This model is controlled by a radio signal subject to interference from many sources outside your control. Interference can cause momentary loss of control.
- Always operate your model in open spaces away from full-size vehicles, traffic and people.

- Always carefully follow the directions and warnings for this and any optional support equipment (chargers, rechargeable battery packs, etc.).
- Always keep all chemicals, small parts and anything electrical out of the reach of children.
- Always avoid water exposure to all equipment not specifically designed and protected for this purpose. Moisture causes damage to unprotected electronics.
- Never place any portion of the model in your mouth as it could cause serious injury or even death.
- Never operate your model with low transmitter batteries.

### Age Recommendation:

**Not for children under 14 years. This is not a toy.**

## Table of Contents

Introduction.....	3	Testing your Boat in the Water .....	9
Recommended Tools and Materials .....	3	When You are Finished.....	10
Product Inspection.....	3	Checklists.....	10
Contents .....	3	Before Boating .....	10
Specifications.....	3	After Boating.....	10
Transmitter Controls.....	4	Maintenance and Repair .....	10
Transmitter Battery Installation .....	4	Troubleshooting Guide .....	11
Binding .....	4	Limited Warranty.....	12
Failsafe .....	5	Warranty and Service Contact Information.....	13
Boat Assembly .....	5	FCC Information.....	14
Mast and Sail Assembly.....	6	Antenna Separation Distance.....	14
Lines and Winch Operation.....	7	IC Information .....	14
Boating Tips.....	7	Compliance Information for the European Union....	15
Getting Started .....	8	Instructions for Disposal of WEEE .....	15
Control Direction Test .....	8	Replacement Parts.....	54
Adjusting Sails.....	9	Optional Parts .....	54
Trimming .....	9		
Control Centering.....	9		
Centering Controls after Voyages .....	9		

## Introduction

Pro Boat® RC models look as good as they perform. Our boats, which include everything from scale sailboats to fully licensed powerboats, exceed expectations and provide years of radio control fun and excitement. Whether your passion leads you towards the pure serenity of sailing or the all-out speed of a Deep-V, Pro Boat models fit your taste, budget and lifestyle. You can count on us to be available any time you need help—the brand is backed by Horizon Hobby, one of the world's largest distributors of hobby-grade RC products. The Pro Boat brand will help you turn your boating passion into a reality, whether you're new to the hobby or an old pro.

Please read this manual for operation and maintenance instructions.

Register your boat online at [www.proboatmodels.com](http://www.proboatmodels.com).

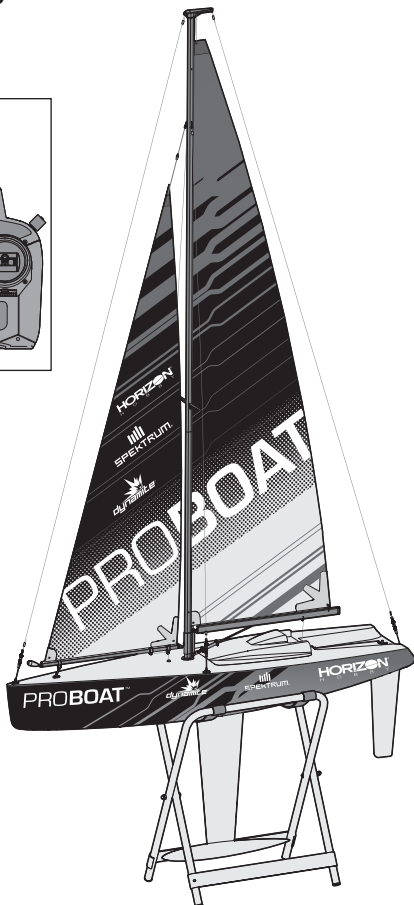
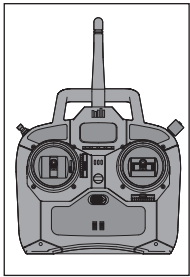
## Recommended Tools and Materials

- Paper towel
- Clear tape (PRB0102)
- Pro Boat® Marine Grease and Gun (PRB0100)
- Medium or Thin CA (cyanoacrylate adhesive) or epoxy adhesive
- 1.5mm and 2.5mm ball type hex wrenches
- 7mm nut driver
- Small flat blade screw driver
- Small Phillips screw driver

## Product Inspection

Carefully remove the boat and radio transmitter from the box. Inspect the boat for damage. If you find damage is present, please contact the hobby shop where you purchased your boat.

## Contents

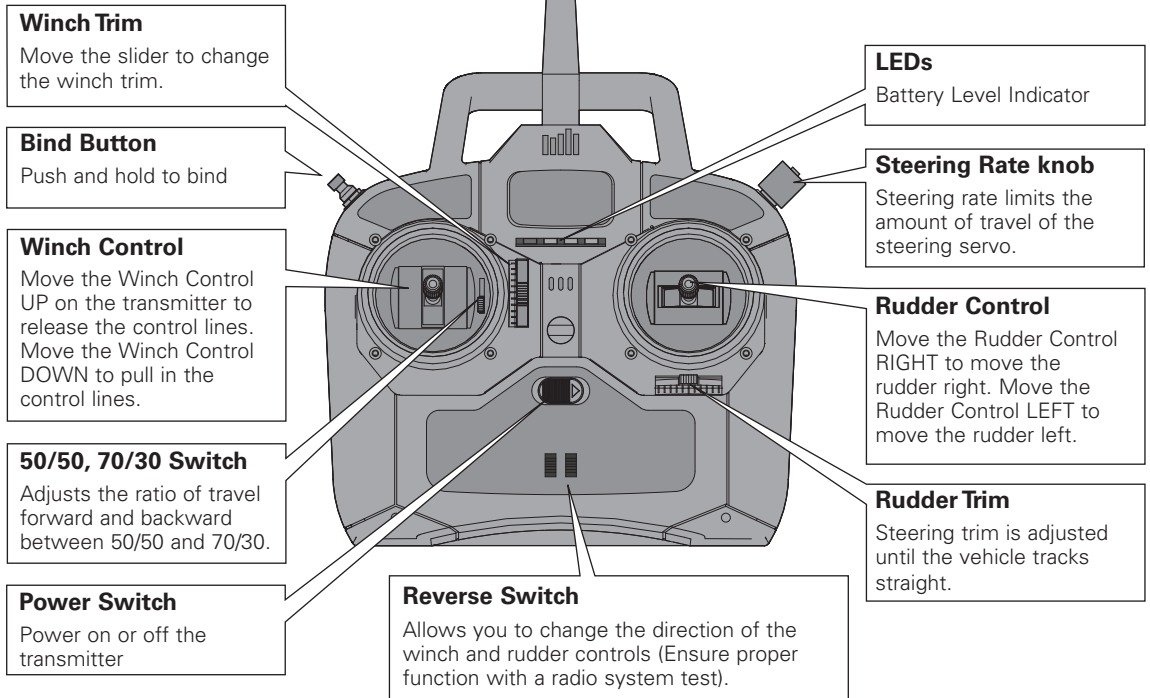


## Specifications

<b>Length</b>	39 in (1.0 m)
<b>Front Beam (width)</b>	14 in (360mm)
<b>Back Beam (width)</b>	14 in (355mm)
<b>Mast Height</b>	61 in (1.55 m)
<b>Total Height</b>	90 in (2.3 m)
<b>Transmitter</b>	Spektrum™ 2.4GHz 2-stick Transmitter (DX2M)
<b>Batteries</b>	4 AA batteries (included) to operate the transmitter. 4 AA batteries (included) to operate the receiver.
<b>Receiver</b>	Spektrum MR200
<b>Hull Material</b>	Fiberglass
<b>Sail Material</b>	Rip-stop nylon
<b>Sail Area (Main)</b>	279 in <sup>2</sup> (0.18 m <sup>2</sup> )
<b>Sail Area (Jib)</b>	372 in <sup>2</sup> (0.24 m <sup>2</sup> )
<b>Sail Area (Overall)</b>	651 in <sup>2</sup> (0.42 m <sup>2</sup> )

## Transmitter Controls

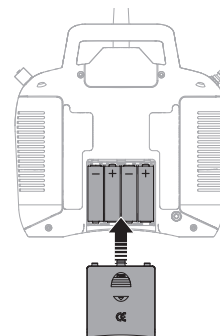
For more information on the transmitter, go to [www.horizonhobby.com/products/SPMR2200](http://www.horizonhobby.com/products/SPMR2200) and click on the support tab for the Spektrum DX2M to download the instruction manual.



## Transmitter Battery Installation

This transmitter operates on 4 AA batteries.

1. Remove the battery cover from the transmitter.
2. Install the batteries as shown.
3. Install the battery cover.

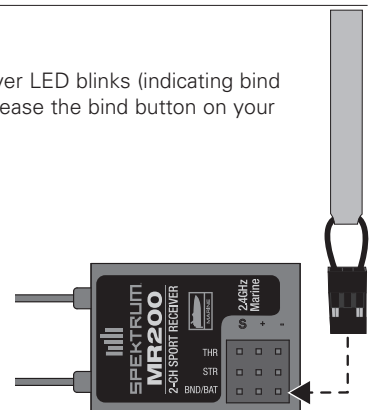


## Binding

Your boat comes bound to the included transmitter. Only perform the following steps if the boat does not respond to the transmitter or you wish to bind the boat to another compatible transmitter.

1. Ensure the transmitter is powered off.
2. Put a bind plug in the BND/BAT port of the receiver.
3. Correctly connect the battery holder (with batteries installed) to the marked + and - pins of the THR or STR port.
4. Hold down the bind button on your transmitter while powering on the transmitter.

5. When the receiver LED blinks (indicating bind is complete), release the bind button on your transmitter.





## Failsafe

In the unlikely event that the radio link is lost during use, the receiver will drive the servos to their pre-programmed failsafe positions (normally sails out and straight steering). If the receiver is powered on before powering on the transmitter, the receiver will enter failsafe mode, driving the servos to their preset failsafe positions. When the transmitter is powered on, normal control is resumed. Failsafe servo positions are set during binding.

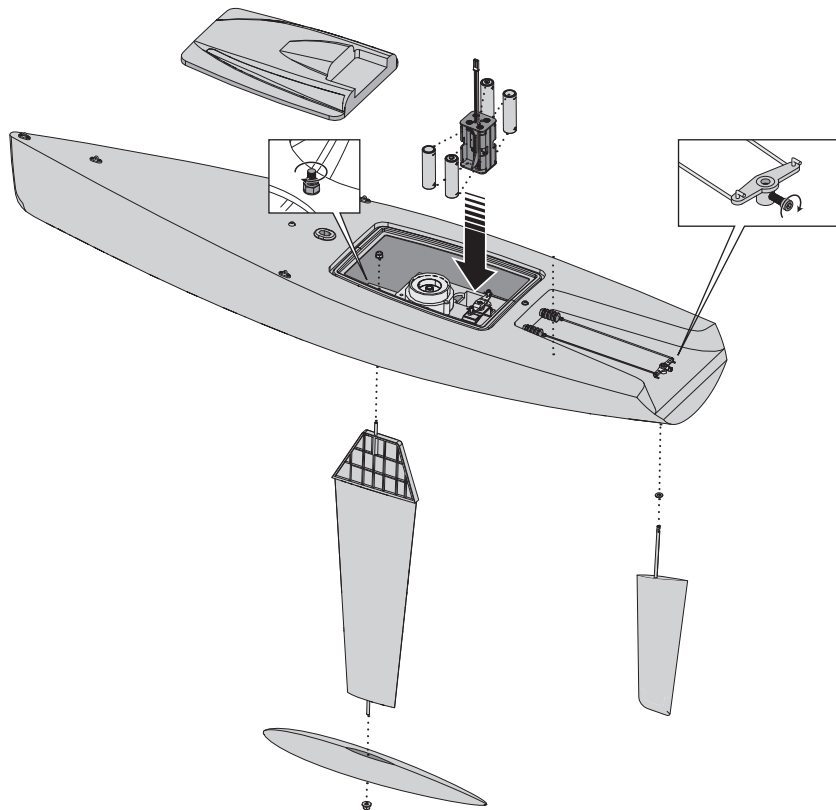
## Boat Assembly

1. Remove the hatch from the hull. Insert the keel post in the bottom of the hull as shown. Secure the post inside the hull by using a washer and lock nut.
2. Install the weight on the keel with the wide end of the weight facing the front of the boat by using a washer and lock nut.
3. Install a plastic spacer on the rudder post. Install the rudder post in the bottom of the hull. Secure the rudder arm on the top of the post by using the hex head screw and a 2.5mm hex wrench.

**Tip:** Apply a thin coat of marine grease (PRB0101 or PRB0100) to the rudder post.

4. Install the battery holder in the hull socket. Replace the hatch.

**Tip:** We recommend applying tape (PRB0102, sold separately) over the hatch and hull to keep out water.



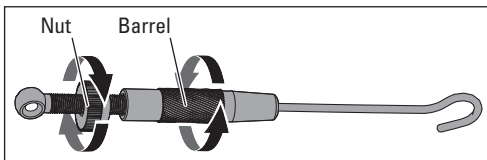
## Mast and Sail Assembly

1. Slide the mast sections together on the wood block and secure the mast using the included screws.
2. Install the main boom and turnbuckle on the mast using 2 screws and 2 washers as shown.
3. Remove the mast crane from the top of the mast and slide the bottom of the main sail cord through the channel in the assembled mast. Replace the mast crane.
4. Secure the outermost corner of the main sail to the end of the boom using the nearby wire loop. Insert the line at the top corner of the main sail through the hole in the mast crane and secure the end of the line around the cleat on the mast. Tie the line at the bottom corner of the main sail through the hole in the boom mount on the mast and around a nearby cleat on the mast. Adjust main sail tension by adjusting the position of the loop on the main boom and the line tension on the mast cleats.

**TIP:** Apply a small amount of thin CA (cyanoacrylate adhesive) to the end of a line before inserting it into the fittings.

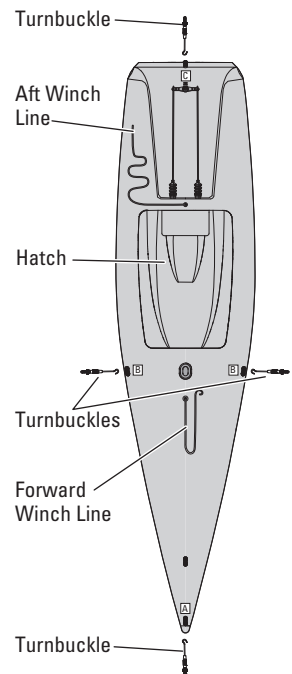
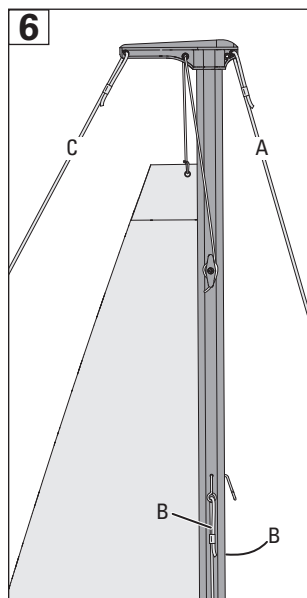
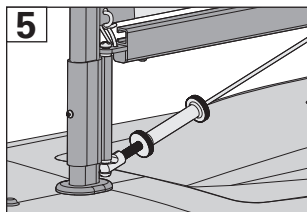
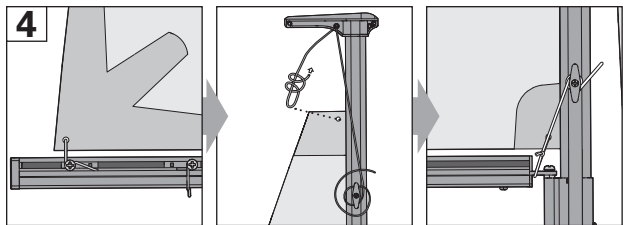
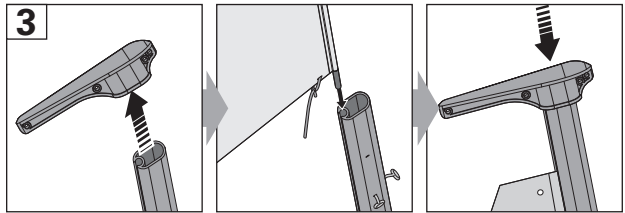
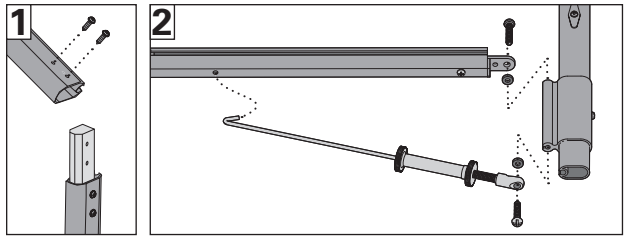
5. Install the bottom of the mast in the hole in the hull.
6. Connect the front (A), rear (C), right (B) and left (B) mast line turnbuckles to the respectively marked fittings on the hull. Leave the mast lines loose until you are ready to sail.

Loosen a turnbuckle nut from against the barrel, turn the barrel on the screws as needed, then tighten the nut to prevent turning. Wrenches or pliers may be required.



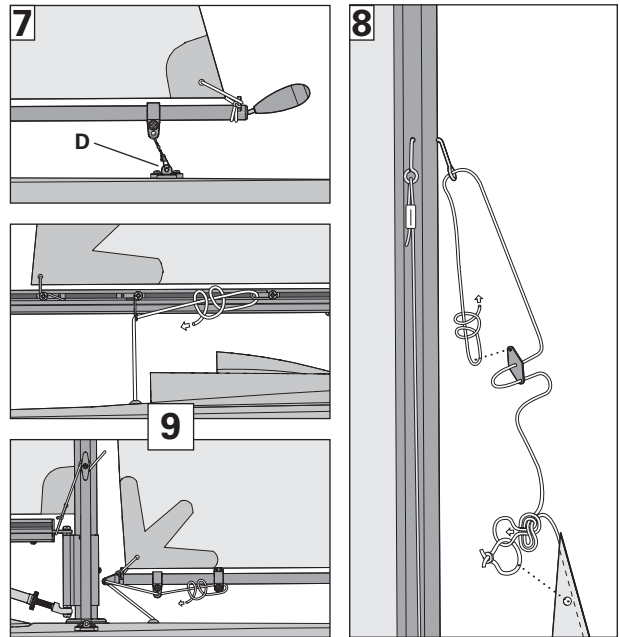
**IMPORTANT:** Adjust the turnbuckles on the mast lines so the mast is centered and perpendicular to the hull. Adjust mast line tension for wind and water conditions.

**NOTICE:** Do not overtighten the mast lines or damage to the hull or mast may result.



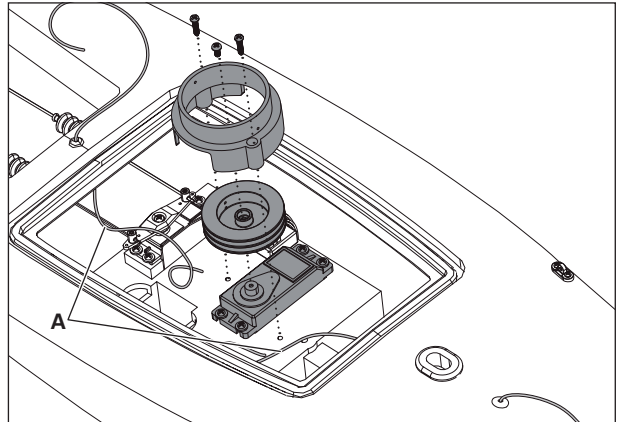
7. Connect the snap hook on the front sail boom to the fitting on the hull (**D**).
8. Tie off the line at the top of the front sail through two holes in a stay, the hook in the front of the mast and the open hole of the stay, as shown.
9. Insert the front and rear winch lines through fittings on the respective booms. Tie the rear line to the loop on the main boom as shown. Tie off the front line through the fitting near the middle of the front boom.

**IMPORTANT:** Keep the winch lines loose on the booms until you operate the winch servo.



## Lines and Winch Operation

Before the first voyage, or in the event of an accident, closely inspect the winch lines (**A**) and ensure they move freely to and from the winch. Always replace worn winch lines and repair the winch so it responds correctly to the transmitter.



## Boating Tips

Avoid boating near other watercraft, stationary objects, waves, wakes and other rapidly moving water, wildlife, floating debris or overhanging trees. You should also be careful to avoid boating in areas where there are many people, such as swimming areas, park waterways or fishing areas. Consult local laws and ordinances before choosing a location to pilot your boat.

- Crash damage is not covered under warranty.
- Avoid vegetation in the water so the keel and rudder are not blocked. However, if these parts are blocked, remove the boat from the water and remove the debris before continuing operation.
- If you need to retrieve your boat from the water, use fishing equipment or another boat.



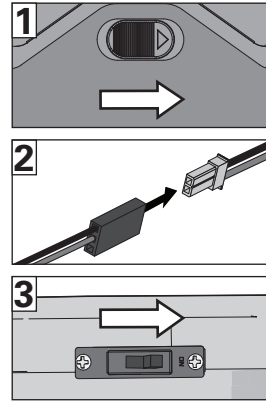
**CAUTION:** Never operate your boat in extreme temperatures or turbulent water.



**CAUTION:** Never attempt to retrieve a downed boat by swimming.

## Getting Started

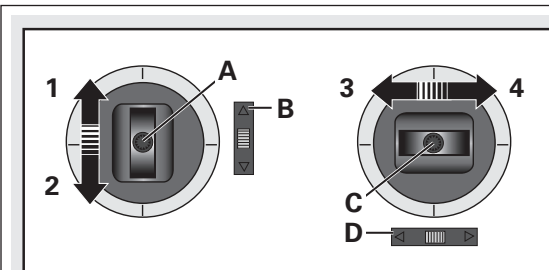
1. Power on the transmitter.
2. Connect the battery.
3. Power on the switch harness mounted under the deck hatch.
4. Test the transmitter's control of the boat (out of water) as shown below.
5. Launch the boat into the water and start sailing.



## Control Direction Test

Perform a control direction test to see how quickly your sailboat responds to transmitter controls. In gusty wind conditions, knowing how fast your sailboat responds can make the difference between easy sailing and sinking your boat.

Ensure your boat and transmitter are bound before doing these tests (see Binding). Move the controls on the transmitter to ensure the rudder and sails move correctly and in the proper direction. Ensure the rudder moves freely and that the winch servo takes in and releases control lines appropriately.



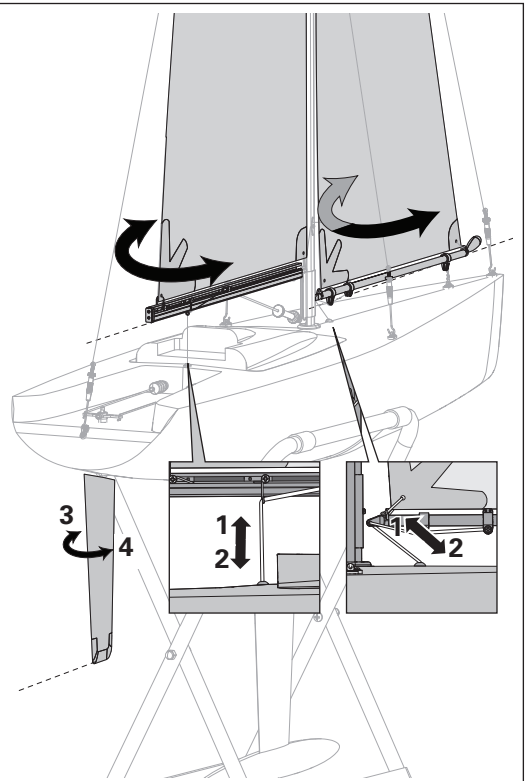
Move the Rudder Control (C) on the transmitter to the right. The rear edge of the rudder should move to the right. Move the stick on the transmitter to the left. The rear edge of the rudder should move to the left.

Use the STR (steering) reversing switch if the direction is reversed.

**Tip:** If you find the boat is turning too quickly, adjust the Steering (ST) Rate knob on the top of the transmitter.

Move the Winch Control (A) up on the transmitter. The winch in the boat will release control lines, so use one hand to move the sails to the right or left. Move the stick down on the transmitter. The winch will pull in control lines.

Use the Throttle (THR) reversing switch on your transmitter if you need to reverse the direction the winch pulls in or releases control lines.



## Adjusting Sails

After you have centered the sails and the rudder, adjust the sails for the most fun and safe sailing. Briefly sail the boat to see how the sails need to be trimmed.

Loosen or tighten a line at the cleat by coiling the line around the cleat.

The DX2M transmitter included with your boat has a control by the sail stick to change between 50/50 and 70/30 travel. Adjust as desired, but always ensure you do not tighten the line too much and damage your boat. If you use a computerized transmitter with your boat, servo travel may be adjusted more than with the included transmitter. Refer to your computerized transmitter manual for servo adjustment instructions. Set servo travel so the lines are JUST taut when the sails are retracted and the sails do not pass a 60 degree angle to

the hull when the sails are extended. Extending the sails past 60 degrees may imbalance the boat, resulting in loss of control.

Contact your local hobby store for information about local model boating clubs or visit [www.sailing.org](http://www.sailing.org) for information about International One Meter (IOM) racing. This model conforms to general requirements for the IOM class; however, consult your local authorities for current regulations.

## Trimming

### Control Centering

Before the first voyage, or in the event of an accident, make sure the rudder and sails are centered.

1. Make sure the sails and rudder are centered (neutral) when the transmitter controls and trims are centered.
2. When needed, manually adjust the length of the control line between the winch in the boat and the fitting on each sail boom. Always adjust the length of the line at the boom, not on the winch inside the boat.

### Centering Controls after Voyages

1. If the model requires excessive transmitter trim (8 or more clicks of trim per channel), return the transmitter trim to zero and adjust the winch lines on the booms manually so the rudder and sails are in the correctly trimmed positions.
2. Ensure the main boom and front sail boom are in line with each other. Adjust the length of the line tied on the booms under the sails if the sails are not centered with each other. Adjust the stay at the top of the front (jib) sail to raise the sail on the mast. Lines may need to be loosened at the bottom of the sail so that you can tighten the top of the sail.

## Testing your Boat in the Water

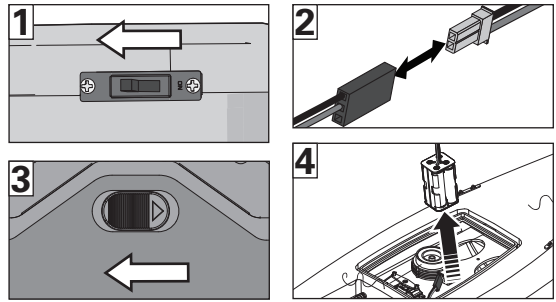
1. Operate the boat at slow speeds near the shoreline. Avoid objects in the water at all times.
2. Always keep your boat in sight while it is in the water.
3. Bring the boat back to shore when you notice the boat starting to become less responsive to the transmitter.

**NOTICE:** Do not turn off the transmitter first or the receiver may pick up stray signals and run out of control.

## When You are Finished

1. Power off the switch harness.
2. Disconnect the battery.
3. Power off the transmitter.
4. Remove the battery from the boat.
5. Loosen all lines.

Always store the boat open (without the hatch sealed) or moisture may allow mold and mildew to grow in the boat.



## Checklists

### Before Boating

- Install fully charged batteries in your boat and transmitter
- Make sure the boat is bound to the transmitter (otherwise, bind the boat to the transmitter using the included binding instructions)
- Make sure all linkages move freely on the boat
- Perform a Control Direction Test with the transmitter
- Adjust the steering rate on your transmitter as desired
- Find a safe and open area of operation
- Plan a safe route for the water and wind conditions

### After Boating

- Always power off the receiver before powering off the transmitter to maintain control of the boat and to retain transmitter binding
- Disconnect the battery from the receiver and remove the batteries from the boat
- Fully dry the inside and outside of the boat. Remove the hatch before storing your boat.
- Repair any damage or wear to the boat
- Make note of lessons learned from the trimming of your boat, including water and wind conditions

**NOTICE:** Running the boat in salt water could cause some parts to corrode. If you run the boat in salt water, rinse it thoroughly in fresh water after each use.

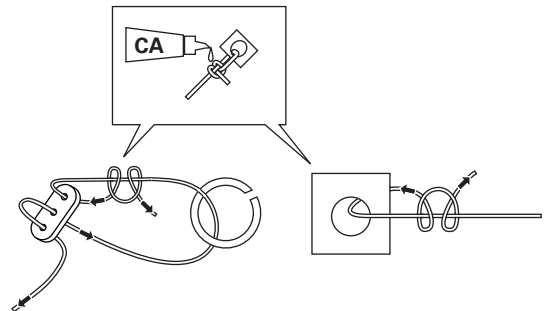
**NOTICE:** Because of its corrosive effects, running RC boats in saltwater is at the discretion of the modeler.

**NOTICE:** When you are finished boating, never leave the boat in direct sunlight or in a hot, enclosed area such as a car. Doing so can damage the boat.

## Maintenance and Repair

When parts are not repairable, see the Replacement Parts List for ordering by item number. For a listing of all replacement and optional parts, refer to the list at the end of this manual.

Apply a drop or two of thin CA (cyanoacrylate adhesive) to each of the knots on the line to prevent the knots from coming loose.



## Troubleshooting Guide

Problem	Possible Cause	Solution
Boat does not respond to the transmitter	Boat receiver is not bound to the transmitter	Bind the receiver to the transmitter
	Low or no power	Replace/recharge batteries Ensure connections are secure and powered on
	Fouled or broken sails, lines or servo	Straighten, tighten or replace damaged parts
Boat moves too fast or too slow for the wind and water conditions	Rigging may be worn	Repair or replace damaged parts
	Sails may be adjusted too tight	Loosen or adjust the sail rigging for wind and water conditions
	Steering rate incorrect on the transmitter for the wind and water conditions	Adjust the steering rate
	Vegetation or other obstacles block the rudder, keel or sails	Remove boat from the water and obstacles
Boat tends to turn one direction	Sails are not centered	Center and adjust the sails and control lines for the wind and water conditions
	Rudder is not centered	Adjust or repair rudder, connectors or servo
Boat tends to drift	Sails are not centered	Center and adjust the sails and control lines for the wind and water conditions
	The rigging is worn or broken	Repair or replace damaged rigging
	Rudder is not centered	Adjust or repair rudder, connectors or servo
Boat tends to dive in the water or takes on water	Sails are rigged too high or low on the mast	Adjust the tightness of the rigging at the top corner and bottom of each sail
	Sails are tied too tight	Loosen lines
	The boat hull is not completely closed	Dry out the boat and ensure the hatch is fully closed on the hull before returning the boat to the water
Winch does not respond to transmitter, while rudder does	Winch servo is disconnected	Connect servo to receiver
	Winch, servo, line or other parts are blocked or damaged	Repair or replace parts
	Servo travel is too low	Adjust travel
	Trim is incorrect	Adjust winch line or transmitter trim
Boat will not Bind (during binding) to transmitter	Transmitter is too near boat during binding process	Move powered transmitter a few feet from boat, disconnect and reconnect battery to boat
	Boat or transmitter is too close to large metal object	Move boat or transmitter away from large metal object
	Bind plug is not installed correctly	Install bind plug in bind port and bind boat to transmitter
	Low or no power	Replace/recharge batteries Ensure connections are secure and powered on
Boat will not connect (after binding) to transmitter	Transmitter is too near boat during connecting process	Move powered transmitter a few feet from boat, disconnect and reconnect battery to boat
	Boat or transmitter is too close to large metal object	Move boat or transmitter away from large metal object
	Bind plug is left installed in bind port	Rebind transmitter to boat and remove bind plug before cycling power
	Boat battery/Transmitter battery charge is too low	Replace/recharge batteries
	Transmitter may have been bound to a different model	Bind boat to transmitter
Controls reversed	Transmitter settings are reversed	Perform the Control Direction Test and adjust controls on transmitter appropriately



# Limited Warranty

## What this Warranty Covers

Horizon Hobby, Inc., (Horizon) warrants to the original purchaser that the product purchased (the "Product") will be free from defects in materials and workmanship at the date of purchase.

## What is Not Covered

This warranty is not transferable and does not cover (i) cosmetic damage, (ii) damage due to acts of God, accident, misuse, abuse, negligence, commercial use, or due to improper use, installation, operation or maintenance, (iii) modification of or to any part of the Product, (iv) attempted service by anyone other than a Horizon Hobby authorized service center, (v) Product not purchased from an authorized Horizon dealer, or (vi) Product not compliant with applicable technical regulations.

OTHER THAN THE EXPRESS WARRANTY ABOVE, HORIZON MAKES NO OTHER WARRANTY OR REPRESENTATION, AND HEREBY DISCLAIMS ANY AND ALL IMPLIED WARRANTIES, INCLUDING, WITHOUT LIMITATION, THE IMPLIED WARRANTIES OF NON-INFRINGEMENT, MERCHANTABILITY AND FITNESS FOR A PARTICULAR PURPOSE. THE PURCHASER ACKNOWLEDGES THAT THEY ALONE HAVE DETERMINED THAT THE PRODUCT WILL SUITABLY MEET THE REQUIREMENTS OF THE PURCHASER'S INTENDED USE.

## Purchaser's Remedy

Horizon's sole obligation and purchaser's sole and exclusive remedy shall be that Horizon will, at its option, either (i) service, or (ii) replace, any Product determined by Horizon to be defective. Horizon reserves the right to inspect any and all Product(s) involved in a warranty claim. Service or replacement decisions are at the sole discretion of Horizon. Proof of purchase is required for all warranty claims. SERVICE OR REPLACEMENT AS PROVIDED UNDER THIS WARRANTY IS THE PURCHASER'S SOLE AND EXCLUSIVE REMEDY.

## Limitation of Liability

HORIZON SHALL NOT BE LIABLE FOR SPECIAL, INDIRECT, INCIDENTAL OR CONSEQUENTIAL DAMAGES, LOSS OF PROFITS OR PRODUCTION OR COMMERCIAL LOSS IN ANY WAY, REGARDLESS OF WHETHER SUCH CLAIM IS BASED IN CONTRACT, WARRANTY, TORT, NEGLIGENCE, STRICT LIABILITY OR ANY OTHER THEORY OF LIABILITY, EVEN IF HORIZON HAS BEEN ADVISED OF THE POSSIBILITY OF SUCH DAMAGES. Further, in no event shall the liability of Horizon exceed the individual price of the Product on which liability is asserted. As Horizon has no control over use, setup, final assembly, modification or misuse, no liability shall be assumed nor accepted for any resulting damage or injury. By the act of use, setup or assembly, the user accepts all resulting liability. If you as the purchaser or user are not prepared to accept the liability associated with the use of the Product, purchaser is advised to return the Product immediately in new and unused condition to the place of purchase.

## Law

These terms are governed by Illinois law (without regard to conflict of law principals). This warranty gives you specific legal rights, and you may also have other rights which vary from state to state. Horizon reserves the right to change or modify this warranty at any time without notice.

## WARRANTY SERVICES

### Questions, Assistance, and Services

Your local hobby store and/or place of purchase cannot provide warranty support or service. Once assembly, setup or use of the Product has been started, you must contact your local distributor or Horizon directly. This will enable Horizon to better answer your questions and service you in the event that you may need any assistance. For questions or assistance, please visit our website at [www.horizonhobby.com](http://www.horizonhobby.com), submit a Product Support Inquiry, or call the toll free telephone number referenced in the Warranty and Service Contact Information section to speak with a Product Support representative.

### Inspection or Services

If this Product needs to be inspected or serviced and is compliant in the country you live and use the Product in, please use the Horizon Online Service Request submission process found on our website or call Horizon to obtain a Return Merchandise Authorization (RMA) number. Pack the Product securely using a shipping carton. Please note that original boxes may be included, but are not designed to withstand the rigors of shipping without additional protection. Ship via a carrier that provides tracking and insurance for lost or damaged parcels, as Horizon is not responsible for merchandise until it arrives and is accepted at our facility. An Online Service Request is available at [http://www.horizonhobby.com/content/\\_service-center\\_render-service-center](http://www.horizonhobby.com/content/_service-center_render-service-center). If you do not have internet access, please contact Horizon Product Support to obtain a RMA number along with instructions for submitting your product for service. When calling Horizon, you will be asked to provide your complete name, street address, email address and phone number where you can be reached during business hours. When sending product into Horizon, please include your RMA number, a list of the included items, and a brief summary of the problem. A copy of your original sales receipt must be included for warranty consideration. Be sure your name, address, and RMA number are clearly written on the outside of the shipping carton.

**NOTICE:** Do not ship LiPo batteries to Horizon. If you have any issue with a LiPo battery, please contact the appropriate Horizon Product Support office.

## Warranty Requirements

**For Warranty consideration, you must include your original sales receipt verifying the proof-of-purchase date.** Provided warranty conditions have been met, your Product will be serviced or replaced free of charge. Service or replacement decisions are at the sole discretion of Horizon.

## Non-Warranty Service

**Should your service not be covered by warranty, service will be completed and payment will be required without notification or estimate of the expense unless the expense exceeds 50% of the retail purchase cost.** By submitting the item for service you are agreeing to payment of the service without notification. Service estimates are available upon request. You must include this request with your item submitted for service. Non-warranty service estimates will be billed a minimum of ½ hour of labor. In addition you will be billed for return freight. Horizon accepts money orders and cashier's checks, as well as Visa, MasterCard, American Express, and Discover cards. By submitting any item to Horizon for service, you are agreeing to Horizon's Terms and Conditions found on our website [http://www.horizonhobby.com/content/\\_service-center\\_render-service-center](http://www.horizonhobby.com/content/_service-center_render-service-center).

**ATTENTION: Horizon service is limited to Product compliant in the country of use and ownership. If received, a non-compliant Product will not be serviced. Further, the sender will be responsible for arranging return shipment of the un-serviced Product, through a carrier of the sender's choice and at the sender's expense. Horizon will hold non-compliant Product for a period of 60 days from notification, after which it will be discarded.**

## Warranty and Service Contact Information

Country of Purchase	Horizon Hobby	Contact Information	Address
United States of America	Horizon Service Center (Repairs and Repair Requests)	<a href="http://servicecenter.horizonhobby.com/RequestForm/">servicecenter.horizonhobby.com/RequestForm/</a>	4105 Fieldstone Rd Champaign, Illinois, 61822 USA
	Horizon Product Support (Product Technical Assistance)	<a href="http://www.quickbase.com/db/bghj7ey8c?a=GenNewRecord">www.quickbase.com/db/bghj7ey8c?a=GenNewRecord</a>	
		888-959-2306	
	Sales	<a href="mailto:sales@horizonhobby.com">sales@horizonhobby.com</a> 888-959-2306	
United Kingdom	Service/Parts/Sales: Horizon Hobby Limited	<a href="mailto:sales@horizonhobby.co.uk">sales@horizonhobby.co.uk</a> +44 (0) 1279 641 097	Units 1-4 , Ployters Rd, Staple Tye Harlow, Essex, CM18 7NS, United Kingdom
Germany	Horizon Technischer Service	<a href="mailto:service@horizonhobby.de">service@horizonhobby.de</a>	Christian-Junge-Straße 1 25337 Elmshorn, Germany
	Sales: Horizon Hobby GmbH	+49 (0) 4121 2655 100	
France	Service/Parts/Sales: Horizon Hobby SAS	<a href="mailto:infofrance@horizonhobby.com">infofrance@horizonhobby.com</a> +33 (0) 1 60 18 34 90	11 Rue Georges Charpak 77127 Lieusaint, France
China	Service/Parts/Sales: Horizon Hobby – China	<a href="mailto:info@horizonhobby.com.cn">info@horizonhobby.com.cn</a> +86 (021) 5180 9868	Room 506, No. 97 Changshou Rd. Shanghai, China 200060

## FCC Information

This device complies with part 15 of the FCC rules. Operation is subject to the following two conditions:

- (1) This device may not cause harmful interference, and
- (2) This device must accept any interference received, including interference that may cause undesired operation.



**CAUTION:** Changes or modifications not expressly approved by the party responsible for compliance could void the user's authority to operate the equipment.

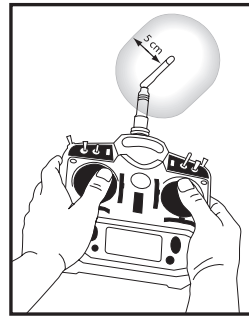
This product contains a radio transmitter with wireless technology which has been tested and found to be compliant with the applicable regulations governing a radio transmitter in the 2.400GHz to 2.4835GHz frequency range.

---

## Antenna Separation Distance

When operating your Spektrum transmitter, please be sure to maintain a separation distance of at least 5 cm between your body (excluding fingers, hands, wrists, ankles and feet) and the antenna to meet RF exposure safety requirements as determined by FCC regulations.

The following illustrations show the approximate 5 cm RF exposure area and typical hand placement when operating your Spektrum transmitter.



---

## IC Information

This device complies with Industry Canada licence-exempt RSS standard(s). Operation is subject to the following two conditions: (1) this device may not cause interference, and (2) this device must accept any interference, including interference that may cause undesired operation of the device.

# Compliance Information for the European Union

AT	BE	BG	CZ	CY	DE	DK
ES	FI	FR	GR	HU	IE	IT
LT	LU	LV	MT	NL	PL	PT
RO	SE	SI	SK	UK		

## Declaration of Conformity

(in accordance with ISO/IEC 17050-1)

No. HH2013082901

Product(s): PRB Ragazza 1 Meter Sailboat RTR

Item Number(s): PRB07000

Equipment class: 2

The object of declaration described above is in conformity with the requirements of the specifications listed below, following the provisions of the European R&TTE directive 1999/5/EC and EMC Directive 2004/108/EC:

**EN 300-328 V1.7.1: 2006**

**EN 301 489-1 V1.9.2: 2012**

**EN 301 489-17 V2.1.1: 2009**

**EN60950-1:2006+A11:2009+A1:2010+A12: 2011**

**EN55022:2010 + AC:2011**

**EN55024:2010**



Signed for and on behalf of:  
Horizon Hobby, Inc.  
Champaign, IL USA  
Aug 29, 2013

Robert Peak  
Chief Financial Officer  
Horizon Hobby, Inc.



## Instructions for Disposal of WEEE by Users in the European Union

This product must not be disposed of with other waste. Instead, it is the user's responsibility to dispose of their waste equipment by handing it over to a designated collection point for the recycling of waste electrical and electronic equipment. The separate collection and recycling of your waste equipment at the time of disposal will help to conserve natural resources and ensure that it is recycled in a manner that protects human health and the environment. For more information about where you can drop off your waste equipment for recycling, please contact your local city office, your household waste disposal service or where you purchased the product.

## Replacement Parts / Ersatzteile / Pièces de rechange / Pezzi di ricambio

PRB270000	Mast, Boom (F&R) and Turnbuckle: Ragazza	ProBoat Ragazza: Mast, Baum u. Spannwirbel	Mât, Bôme (Avant and Arrière) et Ridoir	Albero, boma (anter./ poster.) e tenditori
PRB270001	Sail (F&R): Ragazza	ProBoat Ragazza: Gross- u. Focksegel	Voile (avant et arrière)	Vele (anter./poster.): Ragazza
PRB270002	Rigging: Ragazza	ProBoat Ragazza: Takelage	Gréement	Sartiame: Ragazza
PRB271000	Hull Only: Ragazza	ProBoat Ragazza: Rumpf o. Einbauten	Coque seule	Solo scafo: Ragazza
PRB271001	Hatch: Ragazza	ProBoat Ragazza: Haube	Capot d'écoutes	Boccaporto: Ragazza
PRB271002	Rudder, Rudder Arm and Linkage: Ragazza	ProBoat Ragazza: Ruder, Ruderarm u. Anlenkung	Gouvernail, Bras et Tringlerie	Timone, braccio e collegamenti: Ragazza
PRB271003	Keel: Ragazza	ProBoat Ragazza : Kiel	Quille	Chiglia: Ragazza
PRB3479	Switch harness: Serenity	Proboat Schalterkabel : Serenity	Interruteur de réception	Interruttore: Serenity
PRB3480	Sail Winch Servo: Serenity	Proboat Segelwindenservo : Serenity	Servo treuil (Winch)	Servo verricello per le vele: Serenity
SPMR2200	DX2M 2Ch DSM Stick Surface TX only	Spektrum DX2M 2 Kanal Knüppelsender ohne Empfänger (Ersatzteil)	Emetteur DX2M DSM 2 voies - Surface	Solo trasmettitore a stick DX2M 2ch DSM
SPMMR200	MR200 Marine 2.4GHz 2-Ch Sport Receiver	Spektrum MR200 Marine 2.4GHz 2-Ch Sport Empfänger	Récepteur MR200 Marine Sport 2.4 GHz à 2 voies.	Ricevitore MR200 marino sport, 2 ch, 2,4GHz
ECX13000	3KG Waterproof Steering Servo	325WP 3kg Kunststoff Servo Spritzwasserdicht	Servo de direction Waterproof 3KG	Servo impermeabile da 3kg per il timone

## Optional Parts / Diverse Teile / Pièces optionnelles / Componenti opzionali

PRB0100	Marine grease	Marinefett	Graisse marine	Grasso marino
PRB0102	Waterproof tape	Clearflex Klebeband	Ruban adhésif imperméable	Nastro impermeabile
DYN1448	6V 1400mAh Ni-MH Receiver Flat Pack with JST	Dynamite Empfängerakku 6.0V NiMH 1500mAh 5Z flach BEC	Batterie de réception 6V 1400 Ni-Mh prise BEC	6V 1400mAh Ni-MH Pacco batteria piatto per ricevitore con JST

40164 Created: 08/2013

©2013 Horizon Hobby, Inc.

Pro Boat, the Pro Boat logo, Ragazza, Dynamite, DSM and the Horizon Hobby logo are trademarks or registered trademarks of Horizon Hobby, Inc.

The Spektrum trademark is used with permission of Bachmann Industries, Inc.

PRB07000