

# Instructions

## Ready-Start DM™ Starter Box

Congratulations on your purchase of the Dynamite Ready-Start DM. The Ready-Start DM can be powered by either two 6-cell 7.2V-battery packs (DYN1005) or by a 12V sealed battery (HAN102). The Ready-Start DM is 95% preassembled for your convenience and can be used with most 1/8- and 1/10-scale vehicles.

### Features

- Ready-Start DM offers you two (2) convenient power configurations. You can choose either two 7.2V 6-cell stick packs, or a 12V gel cell sealed lead acid battery.
- Easy-to-adjust alignment plates that will fit virtually every popular 1/8 or 1/10 gas car or truck.
- Two powerful brushed 775 12V motors provide ample power for starting even the largest displacement nitro car engines and can be arranged in three different configurations to facilitate different chassis layouts.

### Specifications

Description: Ready-Start DM

Model number: DYN5650

Weight without Batteries: 2130 g

Dimensions: 390mm x 142mm x 109mm

### Set Up

1. Select a starter box motor configuration to suit your needs and reconfigure motor placement if necessary.
2. Select a battery type for your starter box power and install the correct battery holder.
  - Note: For the 12V motor, the open end should face the back of the box. When installed correctly the 12V battery will sit snugly against the back wall of the starter box and be secured at the front by the holder and holder lid. Secure the holder to the box using four 10mm button head screws. Secure the top of the 12V battery holder using four 30mm flat head screws.
  - Note: When attached correctly, the 7.2V stick battery pack holder lid should open and hinge towards the front of the box.
3. Your Ready-Start DM will come with the starter wheel positioned to start 1/8 off-road buggies and truggies. If you intend on using the box for 1/10 sedans or 1/8 on-road, simply loosen the screws on the bottom of the box, reposition the motor mount to the required position and retighten the screws. The configuration options are shown on the back side of this manual.

### Aligning Your Vehicle

1. Place your vehicle on the box so that the flywheel of your engine matches up with the starter wheel.
2. Locate and place the alignment posts where they will secure the vehicle to the starter box, then tighten.

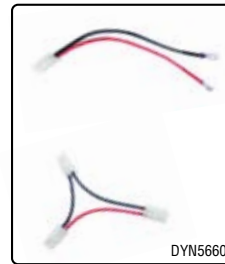
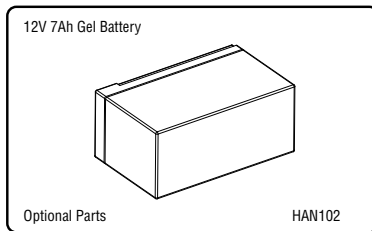
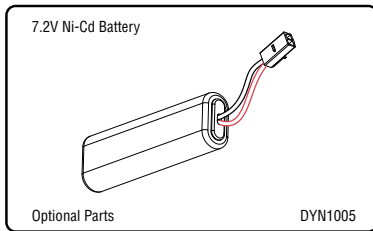
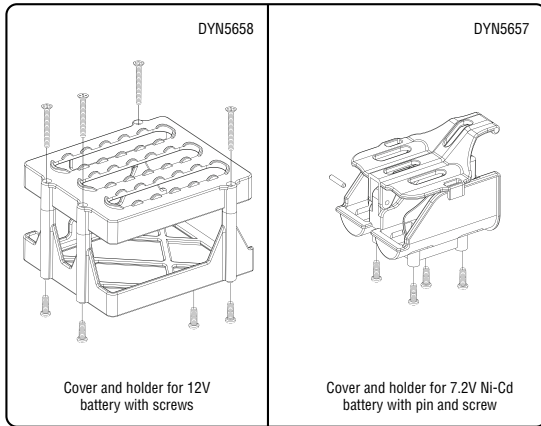
### Starting Your Vehicle

Press down on the rear of your vehicle to engage the starter to the flywheel.

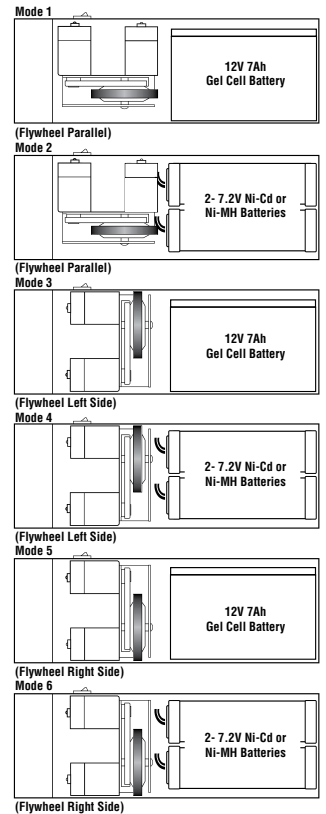
### Precautions

1. Do not allow water, moisture, fuel or foreign objects to come in contact with the motor.
2. Always turn the starter box "OFF" when not in use.

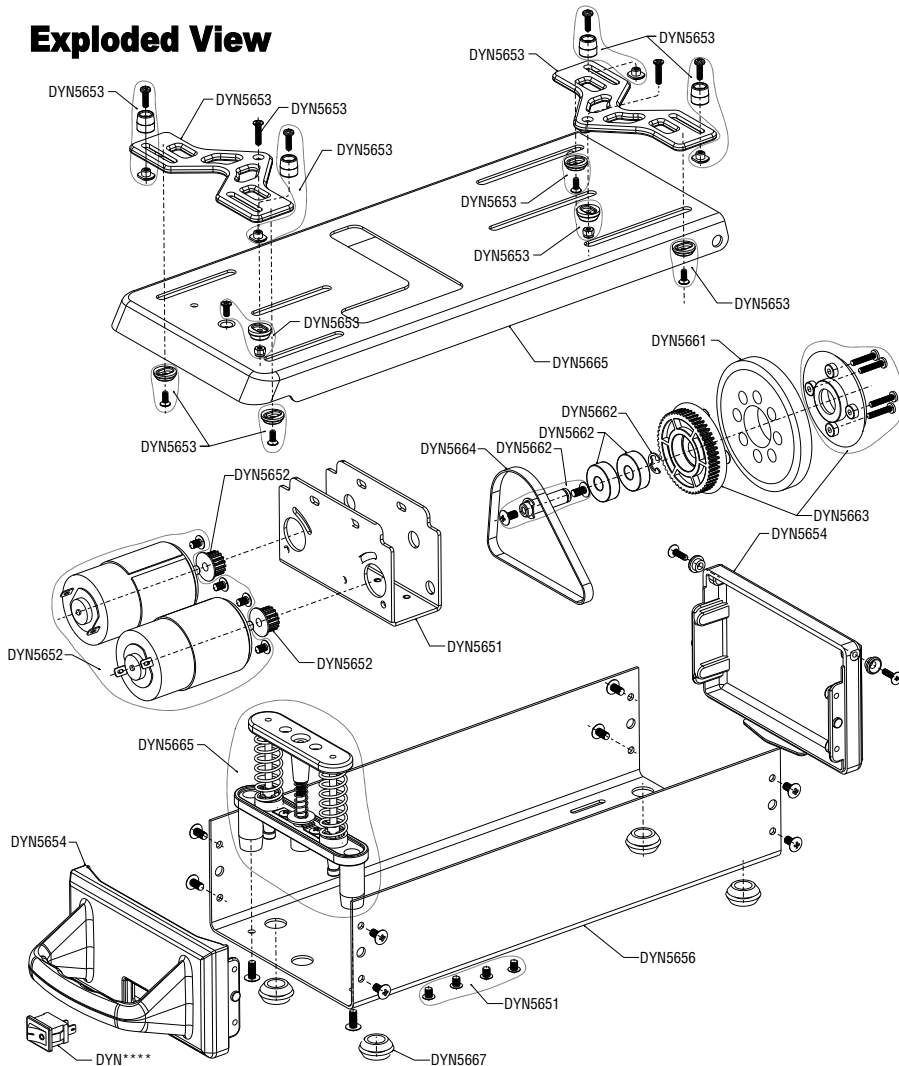
# Ready-Start DM Starter Box



## Motor Layout



## Exploded View



## Replacement Parts

- DYN5650 Ready-Start DM Starter Box
- DYN5651 Motor Mount with Screws
- DYN5652 775 Motors/Screws Motor Gear
- DYN5653 Alignment Plates/Posts/Screws
- DYN5654 End Panels with Screws
- DYN5655 Top Panel with Bushings/Screws
- DYN5656 Main Frame with Screws
- DYN5657 7.2V Ni-Cd/Ni-MH Battery Holder
- DYN5658 12V Gel Cell Holder
- DYN5659 Motor/Switch Wires
- DYN5660 Battery Connection Wires
- DYN5661 Starter Wheel
- DYN5662 Ball Brgs/Center Shaft/E-clip/Screws
- DYN5663 Drive Pulley
- DYN5664 Drive Belt
- DYN5665 Starting Switch
- DYN5666 On/Off Switch
- DYN5667 Rubber Feet

## Option Parts

- DYN1005 7.2V Ni-Cd Battery
- DYN1185 7.2V Ni-MH Battery
- HAN102 12V 7Ah Gel Cell Battery

## Warranty

Warranty Period: Exclusive Warranty- Horizon Hobby, Inc., (Horizon) warrants that the Products purchased (the "Product") will be free from defects in materials and workmanship at the date of purchase by the Purchaser.

## Limited Warranty

(a) This warranty is limited to the original Purchaser ("Purchaser") and is not transferable. REPAIR OR REPLACEMENT AS PROVIDED UNDER THIS WARRANTY IS THE EXCLUSIVE REMEDY OF THE PURCHASER. This warranty covers only those Products purchased from an authorized Horizon dealer. Third party transactions are not covered by this warranty. Proof of purchase is required for warranty claims. Further, Horizon reserves the right to change or modify this warranty without notice and disclaims all other warranties, express or implied.

(b) Limitations- HORIZON MAKES NO WARRANTY OR REPRESENTATION, EXPRESS OR IMPLIED, ABOUT NON-INFRINGEMENT, MERCHANTABILITY OR FITNESS FOR A PARTICULAR PURPOSE OF THE PRODUCT. THE PURCHASER ACKNOWLEDGES THAT THEY ALONE HAVE DETERMINED THAT THE PRODUCT WILL SUITABLY MEET THE REQUIREMENTS OF THE PURCHASER'S INTENDED USE.

(c) Purchaser Remedy- Horizon's sole obligation hereunder shall be that Horizon will, at its option, (i) repair or (ii) replace, any Product determined by Horizon to be defective. In the event of a defect, these are the Purchaser's exclusive remedies. Horizon reserves the right to inspect any and all equipment involved in a warranty claim. Repair or replacement decisions are at the sole discretion of Horizon. This warranty does not cover cosmetic damage or damage due to acts of God, accident, misuse, abuse, negligence, commercial use, or modification of or to any part of the Product. This warranty does not cover damage due to improper installation, operation, maintenance, or attempted repair by anyone other than Horizon. Return of any goods by Purchaser must be approved in writing by Horizon before shipment.

## Damage Limits

HORIZON SHALL NOT BE LIABLE FOR SPECIAL, INDIRECT OR CONSEQUENTIAL DAMAGES, LOSS OF PROFITS OR PRODUCTION OR COMMERCIAL LOSS IN ANY WAY CONNECTED WITH THE PRODUCT, WHETHER SUCH CLAIM IS BASED IN CONTRACT, WARRANTY, NEGLIGENCE, OR STRICT LIABILITY. Further, in no event shall the liability of Horizon exceed the individual price of the Product on which liability is asserted. As Horizon has no control over use, setup, final assembly, modification or misuse, no liability shall be assumed nor accepted for any resulting damage or injury. By the act of use, setup or assembly, the user accepts all resulting liability. If you as the Purchaser or user are not prepared to accept the liability associated with the use of this Product, you are advised to return this Product immediately in new and unused condition to the place of purchase.

Law: These Terms are governed by Illinois law (without regard to conflict of law principals).

## Safety Precautions

This is a sophisticated hobby Product and not a toy. It must be operated with caution and common sense and requires some basic mechanical ability. Failure to operate this Product in a safe and responsible manner could result in injury or damage to the

Product or other property. This Product is not intended for use by children without direct adult supervision. The Product manual contains instructions for safety, operation and maintenance. It is essential to read and follow all the instructions and warnings in the manual, prior to assembly, setup or use, in order to operate correctly and avoid damage or injury.

## Questions, Assistance, and Repairs

Your local hobby store and/or place of purchase cannot provide warranty support or repair. Once assembly, setup or use of the Product has been started, you must contact Horizon directly. This will enable Horizon to better answer your questions and service you in the event that you may need any assistance. For questions or assistance, please direct your email to [productsupport@horizonhobby.com](mailto:productsupport@horizonhobby.com), or call 877.504.0233 toll free to speak to a service technician.

## Inspection or Repairs

If this Product needs to be inspected or repaired, please call for a Return Merchandise Authorization (RMA). Pack the Product securely using a shipping carton. Please note that original boxes may be included, but are not designed to withstand the rigors of shipping without additional protection. Ship via a carrier that provides tracking and insurance for lost or damaged parcels, as Horizon is not responsible for merchandise until it arrives and is accepted at our facility. A Service Repair Request is available at [www.horizonhobby.com](http://www.horizonhobby.com) on the "Support" tab. If you do not have internet access, please include a letter with your complete name, street address, email address and phone number where you can be reached during business days, your RMA number, a list of the included items, method of payment for any non-warranty expenses and a brief summary of the problem. Your original sales receipt must also be included for warranty consideration. Be sure your name, address, and RMA number are clearly written on the outside of the shipping carton.

## Warranty Inspection and Repairs

To receive warranty service, you must include your original sales receipt verifying the proof-of-purchase date. Provided warranty conditions have been met, your Product will be repaired or replaced free of charge. Repair or replacement decisions are at the sole discretion of Horizon Hobby.

## Non-Warranty Repairs

Should your repair not be covered by warranty the repair will be completed and payment will be required without notification or estimate of the expense unless the expense exceeds 50% of the retail purchase cost. By submitting the item for repair you are agreeing to payment of the repair without notification. Repair estimates are available upon request. You must include this request with your repair. Non-warranty repair estimates will be billed a minimum of 1/2 hour of labor. In addition you will be billed for return freight. Please advise us of your preferred method of payment. Horizon accepts money orders and cashiers checks, as well as Visa, MasterCard, American Express, and Discover cards. If you choose to pay by credit card, please include your credit card number and expiration date. Any repair left unpaid or unclaimed after 90 days will be considered abandoned and will be disposed of accordingly. Please note: non-warranty repair is only available on electronics and model engines.

### **United States:**

Electronics and engines requiring inspection or repair should be shipped to the following address:

Horizon Service Center  
4105 Fieldstone Road  
Champaign, Illinois 61822  
USA

All other Products requiring warranty inspection or repair should be shipped to the following address:

Horizon Product Support  
4105 Fieldstone Road  
Champaign, Illinois 61822  
USA

Please call 877-504-0233 or e-mail us at [productsupport@horizonhobby.com](mailto:productsupport@horizonhobby.com) with any questions or concerns regarding this product or warranty.

### **United Kingdom:**

Electronics and engines requiring inspection or repair should be shipped to the following address:

Horizon Hobby UK  
Units 1-4 Ployters Rd  
Staple Tye  
Harlow, Essex  
CM18 7NS  
United Kingdom

Please call +44 (0) 1279 641 097 or e-mail us at [sales@horizonhobby.co.uk](mailto:sales@horizonhobby.co.uk) with any questions or concerns regarding this product or warranty.

### **Germany:**

Electronics and engines requiring inspection or repair should be shipped to the following address:

Horizon Technischer Service  
Hamburger Strasse 10  
25335 Elmshorn  
Germany

Please call +49 4121 46199 66 or e-mail us at [service@horizonhobby.de](mailto:service@horizonhobby.de) with any questions or concerns regarding this product or warranty.

## **Compliance Information for the European Union**

### **Instructions for Disposal of WEEE by Users in the European Union**

This product must not be disposed of with other waste. Instead, it is the user's responsibility to dispose of their waste equipment by handing it over to a designated collection point for the recycling of waste electrical and electronic equipment. The separate collection and recycling of your waste equipment at the time of disposal will help to conserve natural resources and ensure that it is recycled in a manner that protects human health and the environment. For more information about where you can drop off your waste equipment for recycling, please contact your local city office, your household waste disposal service or where you purchased the product.



### **Declaration of Conformity**

(in accordance with ISO/IEC 17050-1)

No. HH2009121602

Product(s): Starter Box  
Item Number(s): DYN5650

The object of declaration described above is in conformity with the requirements of the specifications listed below, following the provisions of the European EMC Directive 2004/108/EC:

EN61000 EMC requirements: emission and immunity

Signed for and on behalf of:  
Horizon Hobby, Inc.  
Champaign, IL USA  
Dec 16, 2009

Steven A. Hall

A handwritten signature in black ink that reads "Steven A. Hall".

Vice President  
International Operations and Risk Management  
Horizon Hobby, Inc.

© 2009, Horizon Hobby, Inc.  
4105 Fieldstone Road  
Champaign, Illinois 61822  
(877) 504-0233  
[www.horizonhobby.com](http://www.horizonhobby.com)

Distributed exclusively by Horizon Hobby Inc.