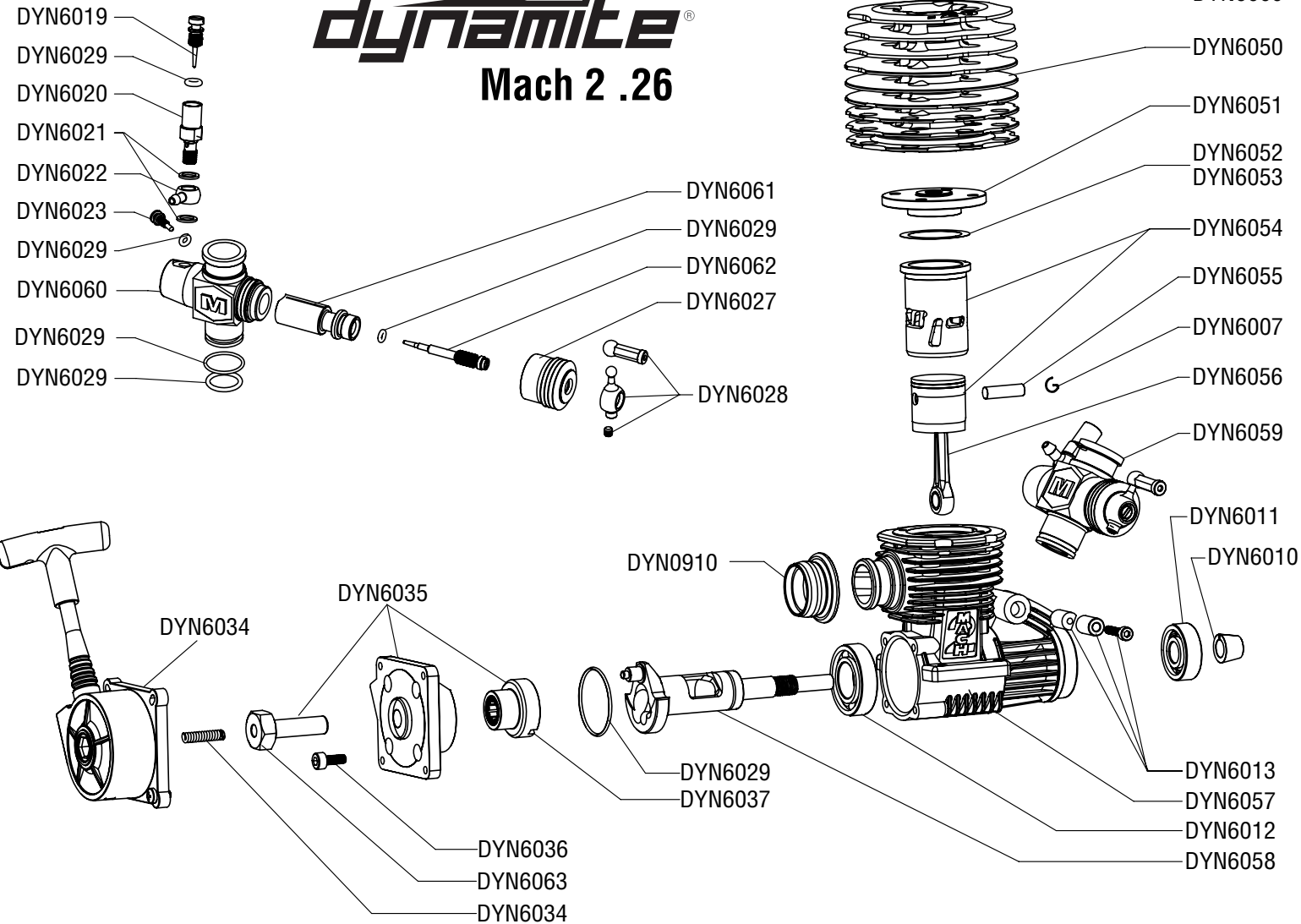




dynamite[®]

Mach 2 .26



Spare Parts Listing

DYN6000	Cylinder Head Screw (4): DYN .26
DYN6050	Cylinder Head: DYN .26
DYN6051	Head Button: DYN .26
DYN6052	Head Shim .1mm: DYN .26
DYN6053	Head Shim .2mm: DYN .26
DYN6054	Piston/Sleeve: DYN .26
DYN6055	Wrist Pin: DYN .26
DYN6007	Wrist Pin Clips (2): DYN .26
DYN6056	Connecting Rod: DYN .26
DYN6059	Slide Carburetor (2-needle): DYN .26
DYN6010	Collet: DYN .26
DYN6011	Front Bearing (7X19X6): DYN .26
DYN6012	Rear Bearing (13X25X6): DYN .26
DYN6013	Carb. Ret. Post Set: DYN .26
DYN6057	Crankcase: DYN .26
DYN6058	Crankshaft: DYN .26
DYN6019	High Speed Needle Valve: DYN .26
DYN6020	High Speed Needle Holder: DYN .26
DYN6021	High Speed Needle Washers: DYN .26
DYN6022	Fuel Inlet Nipple: DYN .26
DYN6023	Idle Speed Screw: DYN .26
DYN6060	Carb Body: DYN .26
DYN6061	Throttle Barrel: DYN .26
DYN6062	Low Speed Needle: DYN .26
DYN6027	Throttle Barrel Boot: DYN .26
DYN6028	Carb Ball Link/Ball End: DYN .26
DYN6029	O-Ring Set: DYN .26
DYN6063	Combo Pull/Spin Start Shaft: DYN .26
DYN6034	Combo Pull/Spin Start Assm: DYN .26
DYN6035	PS Bckplte/Shaft/One-Way: DYN .26
DYN6036	P/S Backplate Screw Set (4): DYN .26
DYN6037	P/S One-way Bearing: DYN .26

© 2009 Horizon Hobby, Inc.

Dynamite engines are manufactured in Taiwan and distributed worldwide by:
 Horizon Hobby, Inc.
 4105 Fieldstone Rd.
 Champaign, IL 61822
 USA

www.horizonhobby.com

Printed 05/09
 15655